

\$10.00

PN 100-20-24

TOTAL FUEL SYSTEMS CATALOG



TROY, MI 2024- V 6.0



2003- Today Logo



1st logo back in 1996

Greetings!

Embark on a thrilling journey with CPR Racing, where passion meets precision, and speed is our forte! For over two decades, we've been at the forefront of crafting high-performance fuel management components for the TOTAL FUEL SYSTEM, igniting the adrenaline rush on both the street and the track.

Established in 1996, CPR Racing has become synonymous with excellence in the automotive industry. As proud members of the Society of Automotive Engineers (SAE) and the Specialty Equipment Market Association, we've consistently set the standard for quality and innovation.

At CPR Racing, we don't just create parts; we engineer experiences. Our dedication revolves around crafting top-tier components that not only meet but exceed expectations in terms of performance, quality, and overall value. We're not content until we've surpassed OEM standards for fit, finish, and durability.

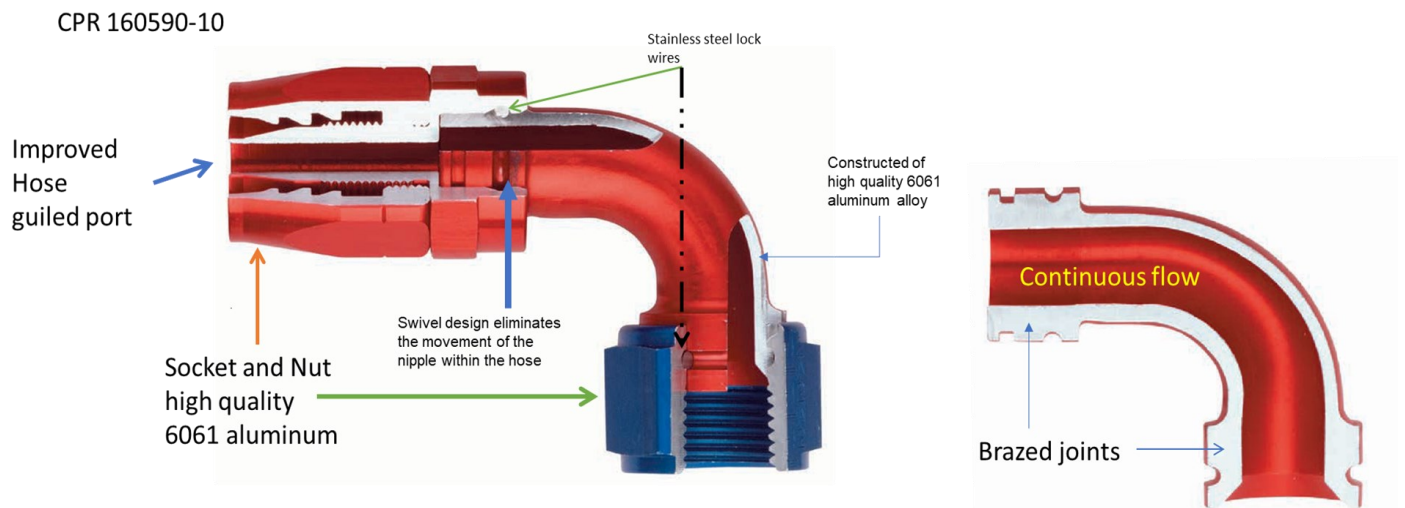
Choosing CPR Racing means making a commitment to excellence. With every component, you're guaranteed the best-engineered parts available, delivering the power, performance, and reliability you crave. Our products are designed with precision and passion, reflecting our shared burning desire for maximum speed and optimal performance.

Join us in the race for perfection, where every curve, every acceleration, and every moment on the track fuels your power plant, a testament to our relentless pursuit of automotive excellence. Your presence at the track is eagerly anticipated!

Sincerely,

Goran Bogdanovic

CPR Racing specializes in high-performance fittings made from 6061T-6 aluminum. These fittings feature an advanced thread design for superior grip strength and improved hose-guided ports. Reusable and equipped with twin Viton O-ring seals, they guarantee a leak-free AN fitting across various performance applications. Corrosion-resistant and Type II certified, these fittings showcase a bright dipped anodized finish. Hand-polished to achieve a "SHOW AND GO" appearance, CPR Racing fittings seamlessly blend style with functionality. Additionally, the letter "G" is represented by "Glide," emphasizing effortless installation, smooth liquid flow, and minimal interference.



When you assembly the CPR G-series -AN Fittings, I Recommending using our Vise Jaws and AN Billet Wrenches your hoses End and AN fittings.so you maintain the SHOW & GO finish on the Nut and Socket (Page 40)

You ask what does AN stand for?

That is right AN (Army-Navy) standard was established in 1939 by the military back in World War II. Set a common measurement for hose and fittings. It specifies the outside diameter (O.D.) of the ridged metal tube that is compatible with each size of fitting. As of today, the -AN standard is the benchmark measurement for military, industrial, and performance hose applications. These dash sizes are expressed as the numerator of the fraction, with the denominator always being 16TH

For Example AN4 PORT IS 4/16 OR 1/4 INCH for mot information see page 36

Product Description	Page #
HOSE ENDS TECH INFORMATION	
Tech Information G-Fitting	3
Reusable Aluminum Fittings and crimp hose	6
PTFE, Push On, NPT hose End	7
BRAIDED HOSE TECH INFORMATION	
Pro-B 1000 ,1500 and 2000 Performance hose	8
PRO B 3000, B4000 SERIES	9
PRO B 5000, B 5400 SERIES Push On Performance hose	10
ALUMINUM HOSE END FITTING	
G160 SWIVEL HOSE END BLUE/ RED	11
G180 SWIVEL HOSE END Black	12
G181 CRIMP ON HOSE END	13
G183 SERIES PTFE HOSE END FITTING	14
G184 SERIES PUSH-LOCK HOSE ENDS	15
G185 SERIES NPT HOSE END / BANJO	16
PRO-B PERFORMANCE BRAIDED LINES (E85)	
PRO-B 1000 ,1500, 2000 SERIES STAINLESS STEEL BRAIDED	17
PRO B 3000, 4000 SERIES PTFE STAINLESS STEEL BRAIDED	18
PRO B 5000, 5400 SERIES Push On Performance hose	19
37° FLARE ,& NPT	
AN FLARE TO O-RING (ORB) MALE	20
AN FLARE TO NPT	21
AN TO METRIC	22
FITTING, COUPLER, UNION, AN TO AN, 90 DEGREEEGREE	23
FLARE TO NPT	24
QUICK DISCONNECT EFI ADAPTER FITTING	25
NPT AND ORB PLUGS	26
BULKHEAD	27
NPT AND O2 WELD BUNGS, V-CLAMP	28-29
TEE'S , BULKHEAD & Y BLOCK	30

Product Description	Page #
FILTER AND BRACKETS	
IN-LINE HIGH FLOW FUEL FILTER	31-32
FUEL PUMP, FILTER BRACKETS AND HOSE SPARATORS	33-34
WIRING	
INJECTOR HARNESSES ADAPTERS	35
FUEL PUMP RELAY KITS	36
ACCESSORY	37
KITS	
LS SWAP, CROSS OVER KITS AND POWER BOX	38
EFI FUEL SYSTEMS / CARBURETOR	
EFI FUEL INJECTOR	39
FUEL PUMPS AND EFI ACCESSORIES	40
FUEL RAILS	41-43
UNIVERSAL FUEL PRESSURE REGULATOR	44
UNIVERSAL FUEL SYSTEM COMPONENTS CARBURETOR KITS	45
ALUMINIUM SURGE TANK AND CATCH CANS	
ALUMINIUM SURGE TANK AND CATCH CANS	46
CATCH CANS	47
TOOLS AND TAPE	
AN WRENCH	48
AN WRENCH DOUBLE-END WRENCH SET	48
AN ADJUSTABLE SPANNER G-WRENCH	48
AN VICE AND HOSE INSTALLATION TOOL	48
INFORMATION CHART	
IDENTIFICATION CHART	49
TECH INFORMATION	50
ASSEMBLY INSTRUCTIONS	25
HOSE MAINTENANCE	52
Notes	53

REUSABLE ALUMINUM FITTINGS AND CRIMP HOSE

CPR G160 Series Swivel Taper Hose End



The CPR G160 Series Swivel Taper Hose End (Blue/Red), meticulously crafted from lightweight 6061 T-6 aluminum. These hose ends swivel 360°, optimizing hose installation for swift alignment after assembly. The unique cutter design ensures seamless assembly, while the 37° angled sealing surface guarantees a secure, leak-free seal. Please note that Red/Blue is not stocked; place orders for a 14-20 day delivery.

Designed to accommodate Pro B 1000, Pro B 1500, and Pro B 2000. page 9

The CPR G180 Series Swivel Taper Hose End



The CPR G180 Series Swivel Taper Hose End (G180 Black) is crafted from lightweight 6061 T-6 aluminum, ensuring durability and performance. The swivel design allows for a 360° rotation, facilitating seamless hose installation and enabling quick alignment of ends post-assembly. The unique cutter design simplifies the assembly process, while the 37° angled sealing surface ensures a secure and leak-resistant seal.

Designed to accommodate Pro B 1000, Pro B 1500, and Pro B 2000 hoses, the G180 Series Swivel Taper Hose End offers a versatile solution for various applications. Trust in its quality construction and thoughtful design for efficient hose assembly and reliable performance. Page 10

The CPR G181 Series Crimp ON Hose End



The CPR G181 Series Crimp ON Hose End, constructed from lightweight 6061 T-6 aluminum, provides optimal performance. Its 360° swivel capability maximizes hose installation, facilitating swift alignment of ends post-assembly. The unique cutter design ensures easy assembly, complemented by a 37° angled sealing surface that guarantees a secure, anti-leak seal.

Designed to accommodate Pro B 1000, 1500, and 2000 Performance fuel hoses, the G181 Series CRIMP ON Hose End offers a reliable solution for various applications. Count on its quality design and efficient features for seamless hose assembly and dependable performance. Page 11

Tech Information G-Fitting PTFE , PUSH ON NPT HOSE END

G183 Series hose PTFE End fittings



The CPR G183 series hose fittings are meticulously crafted for stainless Pro B 3000 and 4000 PTFE hoses, making them an ideal choice for any fuel system. With swivel ends that seamlessly match PTFE hoses from various manufacturers, these fittings are constructed from premium light-weight aluminum. Not only are they reusable, but they are also precision CNC machined and finished with a top-notch anodized coating in the classic gloss Black shade. Specifically designed for Pro B 3000 and Pro B 4000 hoses, the G183 series fittings offer durability and high-performance for your automotive needs. Please note that these PTFE Hose Ends are reusable, but it's essential to replace the olive ferrule (refer to page 12 for details).

G184 Series Push-on hose end



Introducing the G184 Series Push-on Hose End Fitting designed for fuel, oil, and water lines. These fittings are specifically engineered to be paired with PRO-B4000 Series push-lock hoses. CPR Racing ensures maximum weight reduction and simplified installation with a reusable push-and-twist hose barb. These fittings seamlessly connect to stand-

G185 AN Hose End to Male NPT



Introducing the G185 AN Hose End to Male NPT Fitting designed for fuel, oil, and water lines. These fittings are specially crafted to complement PRO-B1000, B1500, and B200 hoses. CPR Racing ensures optimal weight reduction and hassle-free installation with a reusable push-and-twist hose barb. These fittings seamlessly connect to standard 37° AN adapters and are a perfect fit for Pro B 1000, 1500, and 2000 Performance fuel hoses, as detailed on page 15

Tech Information the Pro-B 1000 ,1500 and 2000 Performance hose

The Pro-B1000 Stainless Steel Braided Series hose is a genuine double-braided stainless hose, utilizing the highest-quality stainless wire globally. It features a stainless steel outer braid, providing excellent resistance against abrasion and corrosion. The hose is constructed with a reinforced Chlorinated Polyethylene (CPE) synthetic rubber liner and a nylon inner braid, making it suitable for various applications such as fuel systems, methanol, oils, lubricants, coolant systems, and vacuum applications. The hose maintains performance in a wide temperature range,



Minimum temperature -40C, Maximum temperature 150 C

PRO-B1500 Premium Black Stainless Steel Braided Series Same as Pro-B 1000 **Old School** we had it Painted black this for performance and racing enthusiasts who want high quality light weight hose that is easier to assemble than traditional braided steel hose constructed with a braided nylon outer shield for abrasion resistance .A flexible stainless steel inner core for superior strength embedded in the Chlorinated Polyethylene (CPE) synthetic rubber liner. For use with fuel systems ,methanol, oils, lubricants, coolant systems and vacuum applications



Minimum temperature -40C, Maximum temperature 150 C

Pro-B 2000 Nylon Black Braided Series, Constructed with a braided nylon outer shield for abrasion resistance and Light weight and easier to assemble than Pro-B1000 steel hose and It does not cut your hands up like the Pro-B1000 Series hose, A Flexible stainless steel inner core for superior strength embedded in the Chlorinated Polyethylene (CPE) synthetic rubber liner. For use with fuel systems, E85, E10, methanol, oils, lubricants, coolant systems and vacuum applications.



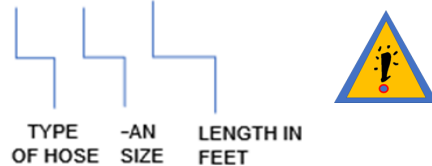
Minimum temperature -40°C, Maximum temperature 150°C.

Fit :G160,G180,G181,G185

*E85 will permeate through this line when stagnant for extended periods of time



CPR 1000 -AN - FEET = CPR 1000-0420



Page number 16

How to Oder Bulk Pro B Performance Hose

Pro-B 1000 Pro-B 1500 and Pro- B 2000 Series Hose					Pro-B 2000 Series Hose			
AN Size	Inner Dia.(I.D.)		Outer Dia (O.D.)		Max Operating Press	Burst Operat- ing Press	Max Operating Press	Burst Operating Press
	Inc	MM	Inc	MM				
4	7/32"	5.4mm	7/16"	11.2mm	500 PSI	2000 PSI	500 PSI	2000 PSI
6	11/32"	8.7mm	9/16"	14..2mm	500 PSI	2000 PSI	500 PSI	2000 PSI
8	7/16"	11.1mm	11/16"	17.1mm	500 PSI	2000 PSI	500 PSI	2000 PSI
10	9/16"	14.2mm	53/64"	20.8mm	500 PSI	2000 PSI	500 PSI	2000 PSI
12	11/16"	17.4mm	31/31"	24.4mm	350 PSI	1400 PSI	350 PSI	1400 PSI
16	7/8"	22.22MM	13/64"	30.5mm	350 PSI	1400 PSI	350 PSI	1400 PSI
20	1 1/8"	28.5MM	1 13/32"	35.81MM	350 PSI	1400 PSI	350 PSI	1400 PSI

The **Pro-B3000 Series features a Stainless Steel Braided PTFE hose**. This durable hose boasts a PTFE inner liner with a 308 stainless steel braid, providing toughness that resists leaks and vapor. With a high-pressure rating of up to 3000 psi, it ensures reliable performance. The stainless steel outer cover offers excellent abrasion resistance, specifically designed to pair seamlessly with CPR PN183 series hose fittings tailored for Pro B 3000 and 4000 PTFE hoses. Ideal for brake, E85, alcohol, transmission, clutch, nitrous, power steering, oiling, hydraulics, and vacuum applications, this hose is rated for a wide temperature range, with a minimum temperature of -70°C and a maximum temperature of 250°C. Notably, it is recommended for brake and power steering lines."



Minimum temperature -70C, Maximum temperature 250 C

The **Pro-B4000 PTFE Black Braided Hose is a part** of the Pro-B4000 Series, known for its durability. Constructed with a PTFE inner liner and a robust 308 Stainless Steel layer reinforced by a black nylon outer braid, this hose offers both a sleek appearance and excellent abrasion resistance. Specifically designed for compatibility with CPR # G183 series hose fittings made for stainless Pro B 3000 and 4000 PTFE hoses, it comes highly recommended for a variety of applications, including brake, E85, alcohol, transmission, clutch, nitrous, power steering, oil, hydraulics, and vacuum. The stainless steel reinforced middle layer ensures maximum strength and burst pressure, while the braided nylon outer shield adds an extra layer of abrasion resistance. Operating within a broad temperature range, this hose is suitable for temperatures ranging from -70°C to 250°C



3000 and 4000 Series PTFE Stainless Steel Braided Hose

Part number	AN Size	Inner Dia.(I.D.)		Outer Dia (O.D.)		Max Operating PPSI	Burst Operating PPSI	Min Bend Radius
		Inc	MM	Inc	MM			
3000 & 4000	3	9/64"	3.56MM	1/4"	6.35MM	4000 PSI	12000 PSI	2"
3000 & 4000	4	3/16"	4.83MM	5/16"	8.00MM	4000 PSI	12000 PSI	2"
3000 & 4000	6	21/64"	8.13MM	27/64"	10.92MM	3000 PSI	10000 PSI	3"
3000 & 4000	8	27/64"	10.67MM	35/64"	13.72MM	2500 PSI	8000 PSI	5.25"
3000 & 4000	10	33/64"	12.95MM	5/8"	16.00MM	2500 PSI	6000 PSI	6.5"
3000 & 4000	12	41/64"	16.26MM	49/64"	19.30MM	1000 PSI	4000 PSI	7.5"
3000 & 4000	16	7/8"	22.22MM	1 1/32"	26.16MM	1000 PSI	3000 PSI	8.5"
3000 & 4000	20	1 1/8"	28.57MM	1 9/32"	32.77MM	1000 PSI	2500 PSI	9.25"

Fit :G183 series hose fittings



The PRO-B5000 Series Push On Blue hose is specifically crafted for use with G184 series Push-on fittings by CPR RACING. These push-on hoses are versatile and well-suited for applications involving coolants, oil, air, methanol, and E85. It's important to note that in situations where the temperature exceeds 70°C, the use of a clamp is recommended for optimal performance.



The hose is designed to operate within a temperature range of -40°C to 100°C, with a specific water temperature limit of 70°C

The PRO-B5400 Series Black Push Lock Hose is tailored for use with G184 Series Push-on fittings. These push-on hoses are versatile and suitable for a range of applications, including coolants, oil, air, methanol, and E85 fuel. It's important to note that in situations where the temperature exceeds 70°C, the use of a clamp is recommended for optimal performance.



The hose is designed to operate within a temperature range of -40°C to 100°C, with a specific water temperature limit of 70°C

5000 & 5100 Push on Hose							
Part number	AN Size	Inner Dia.(I.D.)		Outer Dia (O.D.)		Max Operating PPSI	Min Bend Radius
		Inc	MM	Inc	MM		
5000 & 5400	4	1/4"	6.35mm	15/32"	11.94mm	250 PSI	2.5"
5000 & 5400	6	3/8"	7.9mm	5/8"	16.0mm	250 PSI	3.0"
5000 & 5400	8	1/2"	12.7mm	3/4"	19.05mm	250 PSI	5.0"
5000 & 5400	10	5/8"	16.0mm	15/16"	23.88mm	250 PSI	6.0"
5000 & 5400	12	3/4"	19.05mm	1.0"	25.4mm	250 PSI	7.0"



After the hose have been cut and the fittings install or crimped, rubber debris, as well as metal particles resulting from the assembly process, are likely to enter the fuel system if you don't.

Please blow you hose to ensure it clean before use.

Fit G184 Series Push-on fittings.

How to Oder Bulk Pro B Performance Hose



CPR 1000 -AN - FEET = CPR 1000-0420



G160 SWIVEL HOSE END BLUE/ RED

REUSABLE ALUMINUM FITTING

*Click on the product you like and it will take you the web page

STRAIGHT HOSE ENDS



Part Number	AN Size	Hose Size
160500-04	AN4	AN4
160500-06	AN6	AN6
160500-08	AN8	AN8
160500-10	AN10	AN10
160500-12	AN12	AN12
160500-16	AN16	AN16
160500-20	AN20	AN20

90° SWIVEL HOSE ENDS



Part Number	AN Size	Hose Size
160590-04	AN4	AN4
160590-06	AN6	AN6
160590-08	AN8	AN8
160590-10	AN10	AN10
160590-12	AN12	AN12
160590-16	AN16	AN16
160590-20	AN20	AN20

30° SWIVEL HOSE ENDS



Part Number	AN Size	Hose Size
160530-04	AN4	AN4
160530-06	AN6	AN6
160530-08	AN8	AN8
160530-10	AN10	AN10
160530-12	AN12	AN12
160530-16	AN16	AN16
160530-20	AN20	AN20

120° SWIVEL HOSE ENDS



Part Number	AN Size	Hose Size
160512-04	AN4	AN4
160512-06	AN6	AN6
160512-08	AN8	AN8
160512-10	AN10	AN10
160512-12	AN12	AN12
160512-16	AN16	AN16
160512-20	AN20	AN20

45° SWIVEL HOSE ENDS



Part Number	AN Size	Hose Size
160545-04	AN4	AN4
160545-06	AN6	AN6
160545-08	AN8	AN8
160545-10	AN10	AN10
160545-12	AN12	AN12
160545-16	AN16	AN16
160545-20	AN20	AN20

150° SWIVEL HOSE ENDS



Part Number	AN Size	Hose Size
160515-04	AN4	AN4
160515-06	AN6	AN6
160515-08	AN8	AN8
160515-10	AN10	AN10
160515-12	AN12	AN12
160515-16	AN16	AN16
160515-20	AN20	AN20

60° SWIVEL HOSE ENDS



Part Number	AN Size	Hose Size
160560-04	AN4	AN4
160560-06	AN6	AN6
160560-08	AN8	AN8
160560-10	AN10	AN10
160560-12	AN12	AN12
160560-16	AN16	AN16
160560-20	AN20	AN20

180° SWIVEL HOSE ENDS



Part Number	AN Size	Hose Size
160518-04	AN4	AN4
160518-06	AN6	AN6
160518-08	AN8	AN8
160518-10	AN10	AN10
160518-12	AN12	AN12
160518-16	AN16	AN16
160518-20	AN20	AN20

Note: We do not stock Red/Blue Fitting they are made to order once your order place allow 14– 20 days

G180 SWIVEL HOSE END

REUSABLE ALUMINUM FITTING

*Click on the product you like and it will take you the web page

STRAIGHT HOSE ENDS



Part Number	AN Size	Hose Size
180500-04	AN4	AN4
180500-06	AN6	AN6
180500-08	AN8	AN8
180500-10	AN10	AN10
180500-12	AN12	AN12
180500-16	AN16	AN16
180500-20	AN20	AN20

90° SWIVEL HOSE ENDS



Part Number	AN Size	Hose Size
180590-04	AN4	AN4
180590-06	AN6	AN6
180590-08	AN8	AN8
180590-10	AN10	AN10
180590-12	AN12	AN12
180590-16	AN16	AN16
180590-20	AN20	AN20

30° SWIVEL HOSE ENDS



Part Number	AN Size	Hose Size
180530-04	AN4	AN4
180530-06	AN6	AN6
180530-08	AN8	AN8
180530-10	AN10	AN10
180530-12	AN12	AN12
180530-16	AN16	AN16
180530-20	AN20	AN20

120° SWIVEL HOSE ENDS



Part Number	AN Size	Hose Size
180512-04	AN4	AN4
180512-06	AN6	AN6
180512-08	AN8	AN8
180512-10	AN10	AN10
180512-12	AN12	AN12
180512-16	AN16	AN16
180512-20	AN20	AN20

45° SWIVEL HOSE ENDS



Part Number	AN Size	Hose Size
180545-04	AN4	AN4
180545-06	AN6	AN6
180545-08	AN8	AN8
180545-10	AN10	AN10
180545-12	AN12	AN12
180545-16	AN16	AN16
180545-20	AN20	AN20

150° SWIVEL HOSE ENDS



Part Number	AN Size	Hose Size
180515-04	AN4	AN4
180515-06	AN6	AN6
180515-08	AN8	AN8
180515-10	AN10	AN10
180515-12	AN12	AN12
180515-16	AN16	AN16
180515-20	AN20	AN20

60° SWIVEL HOSE ENDS



Part Number	AN Size	Hose Size
180560-04	AN4	AN4
180560-06	AN6	AN6
180560-08	AN8	AN8
180560-10	AN10	AN10
180560-12	AN12	AN12
180560-16	AN16	AN16
180560-20	AN20	AN20

180° SWIVEL HOSE ENDS



Part Number	AN Size	Hose Size
180518-04	AN4	AN4
180518-06	AN6	AN6
180518-08	AN8	AN8
180518-10	AN10	AN10
180518-12	AN12	AN12
180518-16	AN16	AN16
180518-20	AN20	AN20

G181 CRIMP ON HOSE END

ALUMINUM FITTING

*Click on the product you like and it will take you the web page

STRAIGHT CRIMP ON HOSE ENDS



Part Number	AN Size	Hose Size
181500-06	AN6	AN6
181500-08	AN8	AN8
181500-10	AN10	AN10
181500-12	AN12	AN12
181500-16	AN16	AN16

90° CRIMP ON HOSE ENDS



Part Number	AN Size	Hose Size
181590-06	AN6	AN6
181590-08	AN8	AN8
181590-10	AN10	AN10
181590-12	AN12	AN12
181590-16	AN16	AN16

30° CRIMP ON HOSE ENDS



Part Number	AN Size	Hose Size
181530-06	AN6	AN6
181530-08	AN8	AN8
181530-10	AN10	AN10
181530-12	AN12	AN12
181530-16	AN16	AN16

120° CRIMP ON HOSE ENDS



Part Number	AN Size	Hose Size
181512-06	AN6	AN6
181512-08	AN8	AN8
181512-10	AN10	AN10
181512-12	AN12	AN12
181512-16	AN16	AN16

45° CRIMP ON HOSE ENDS



Part Number	AN Size	Hose Size
181545-06	AN6	AN6
181555-08	AN8	AN8
181545-10	AN10	AN10
181545-12	AN12	AN12
181545-16	AN16	AN16

150° CRIMP ON HOSE ENDS



Part Number	AN Size	Hose Size
181515-06	AN6	AN6
181515-08	AN8	AN8
181515-10	AN10	AN10
181515-12	AN12	AN12
181515-16	AN16	AN16

[https://cpracing.com/product-](https://cpracing.com/product-category/an-fittings/g181-straight)

[category/an-fittings/g181-straight](https://cpracing.com/product-category/an-fittings/g181-straight)

60° CRIMP ON HOSE ENDS



Part Number	AN Size	Hose Size
181560-06	AN6	AN6
181560-08	AN8	AN8
181560-10	AN10	AN10
181560-12	AN12	AN12
181560-16	AN16	AN16

180° CRIMP ON HOSE ENDS



Part Number	AN Size	Hose Size
181518-06	AN6	AN6
181518-08	AN8	AN8
181518-10	AN10	AN10
181518-12	AN12	AN12
181518-16	AN16	AN16

CLAMP SLEEVE



Part Number	Hose Size
181211-06	AN6
181211-08	AN8
181211-10	AN10
181211-12	AN12
181211-16	AN16



G183 SERIES PTFE HOSE END FITTING

PTFE ALUMINUM FITTING

STRAIGHT CRIMP ON HOSE END



Part Number	AN Size	Hose Size
183500-03	AN3	AN3
183500-04	AN4	AN4
183500-06	AN6	AN6
183500-08	AN8	AN8
183500-10	AN10	AN10
183500-12	AN12	AN12
183500-16	AN16	AN16

90° PTFE SWIVEL HOSE END



Part Number	AN Size	Hose Size
183590-03	AN3	AN3
183590-04	AN4	AN4
183590-06	AN6	AN6
183590-08	AN8	AN8
183590-10	AN10	AN10
183590-12	AN12	AN12
183590-16	AN16	AN16

30° PTFE SWIVEL HOSE END



Part Number	AN Size	Hose Size
183530-03	AN3	AN3
183530-04	AN4	AN4
183530-06	AN6	AN6
183530-08	AN8	AN8
183530-10	AN10	AN10
183530-12	AN12	AN12
183530-16	AN16	AN16

120° PTFE SWIVEL HOSE END



Part Number	AN Size	Hose Size
183512-03	AN3	AN3
183512-04	AN4	AN4
183512-06	AN6	AN6
183512-08	AN8	AN8
183512-10	AN10	AN10
183512-12	AN12	AN12
183512-16	AN16	AN16

45° PTFE SWIVEL HOSE END



Part Number	AN Size	Hose Size
183545-03	AN3	AN3
183545-04	AN4	AN4
183545-06	AN6	AN6
183545-08	AN8	AN8
183545-10	AN10	AN10
183545-12	AN12	AN12
183545-16	AN16	AN16

150° PTFE SWIVEL HOSE END



Part Number	AN Size	Hose Size
183515-03	AN3	AN3
183515-04	AN4	AN4
183515-06	AN6	AN6
183515-08	AN8	AN8
183515-10	AN10	AN10
183515-12	AN12	AN12
183515-16	AN16	AN16

60° PTFE SWIVEL HOSE END



Part Number	AN Size	Hose Size
183560-03	AN3	AN3
183560-04	AN4	AN4
183560-06	AN6	AN6
183560-08	AN8	AN8
183560-10	AN10	AN10
183560-12	AN12	AN12
183560-16	AN16	AN16

180° PTFE SWIVEL HOSE END



Part Number	AN Size	Hose Size
183518-03	AN3	AN3
183518-04	AN4	AN4
183518-06	AN6	AN6
183518-08	AN8	AN8
183518-10	AN10	AN10
183518-12	AN12	AN12



Part Number	NUT
Ptfe Nut-04	AN4
Ptfe Nut-06	AN6
Ptfe Nut-08	AN8
Ptfe Nut-10	AN10
Ptfe Nut-12	AN12
Ptfe Nut-16	AN16



Part Number	AN Size
OLIVE-03	AN3
OLIVE-04	AN4
OLIVE-06	AN6
OLIVE-08	AN8
OLIVE-10	AN10
OLIVE-12	AN12
OLIVE-16	AN16

G184 SERIES PUSH-LOCK HOSE ENDS

REUSABLE ALUMINUM FITTING

STRAIGHT PUSH LOCK HOSE ENDS



Part Number	AN Size	Hose Size
184500-04	AN4	AN4
184500-06	AN6	AN6
184500-08	AN8	AN8
184500-10	AN10	AN10
184500-12	AN12	AN12
184500-16	AN16	AN16

90° PUSH LOCK HOSE ENDS



Part Number	AN Size	Hose Size
184590-04	AN4	AN4
184590-06	AN6	AN6
184590-08	AN8	AN8
184590-10	AN10	AN10
184590-12	AN12	AN12
184590-16	AN16	AN16

30° PUSH LOCK HOSE ENDS



Part Number	AN Size	Hose Size
184530-04	AN4	AN4
184530-06	AN6	AN6
184530-08	AN8	AN8
184530-10	AN10	AN10
184530-12	AN12	AN12
184530-16	AN16	AN16

120° PUSH LOCK HOSE ENDS



Part Number	AN Size	Hose Size
184512-04	AN4	AN4
184512-06	AN6	AN6
184512-08	AN8	AN8
184512-10	AN10	AN10
184512-12	AN12	AN12
184512-16	AN16	AN16

45° PUSH LOCK HOSE ENDS



Part Number	AN Size	Hose Size
184545-04	AN4	AN4
184545-06	AN6	AN6
184545-08	AN8	AN8
184545-10	AN10	AN10
184545-12	AN12	AN12
184545-16	AN16	AN16

150° PUSH LOCK HOSE ENDS



Part Number	AN Size	Hose Size
184515-04	AN4	AN4
184515-06	AN6	AN6
184515-08	AN8	AN8
184515-10	AN10	AN10
184515-12	AN12	AN12
184515-16	AN16	AN16

60° PUSH LOCK HOSE ENDS



Part Number	AN Size	Hose Size
184560-04	AN4	AN4
184560-06	AN6	AN6
184560-08	AN8	AN8
184560-10	AN10	AN10
184560-12	AN12	AN12
184560-16	AN16	AN16

180° PUSH LOCK HOSE ENDS



Part Number	AN Size	Hose Size
184518-04	AN4	AN4
184518-06	AN6	AN6
184518-08	AN8	AN8
184518-10	AN10	AN10
184518-12	AN12	AN12
184518-16	AN16	AN16

Part Number	AN Size	Hose Size
184600-04	4AN	4AN
184600-06	6AN	6AN



G185 SERIES NPT HOSE END / BANJO

ALUMINUM FITTING

NPT STRAIGHT HOSE ENDS



Part Number	AN Size	NPT
185500-01	AN6	1/8"
185500-02	AN6	1/4"
185500-03	AN6	3/8"
185500-04	AN8	1/4"
185500-05	AN8	1/2"
185500-06	AN8	3/8"
185500-07	AN10	3/8"
185500-08	AN10	1/2"
185500-09	AN12	1/2"
185500-10	AN12	3/4"
185500-11	AN16	3/4"
185500-12	AN16	1"

45°NPT SWIVEL HOSE ENDS



Part Number	AN Size	NPT
185545-13	AN6	1/8"
185545-14	AN6	1/4"
185545-15	AN6	3/8"
185545-16	AN8	1/4"
185545-17	AN8	1/2"
185545-18	AN8	3/8"
185545-19	AN10	3/8"
185545-20	AN10	1/2"
185545-21	AN12	1/2"
185545-22	AN12	3/4"
185545-23	AN16	3/4"
185545-24	AN16	1"

90° NPT SWIVEL HOSE ENDS



Part Number	AN Size	NPT
185590-25	AN6	1/8"
185590-26	AN6	1/4"
185590-27	AN6	3/8"
185590-28	AN8	1/4"
185590-29	AN8	1/2"
185590-30	AN8	3/8"
185590-31	AN10	3/8"
185590-32	AN10	1/2"
185590-33	AN12	1/2"
185590-34	AN12	3/4"
185590-35	AN16	3/4"
185590-36	AN16	1"

Banjo Bolt



Part Number	Product Description
63000-01	Black Banjo Bolt M10X1.0 / 23mm Long
63000-02	Black Banjo Bolt M10X1.25 / 23 mm Long
63000-03	Black Banjo Bolt M10X1.5 / 23 mm Long
63000-04	Black Banjo Bolt 3/8X20 / 23 mm Long
63000-05	Black Banjo Bolt 3/8X24 / 23 mm Long
63000-06	Black Banjo Bolt 7/16X20 / 23 mm Long
63000-07	Black Banjo Bolt 7/16X24 / 23 mm Long
63000-08	Black Banjo Bolt M8X1.0 / 20 mm Long
63000-09	Black Banjo Bolt M8X1.25 / 20 mm Long
63000-10	Black Banjo Bolt M10X1.0 / 20 mm Long
63000-11	Black Banjo Bolt M10X1.25 / 20 mm Long
63000-12	Black Banjo Bolt M10X1.5 / 20 mm Long
63000-13	Black Banjo Bolt M12X1.0 / 20 mm Long
63000-14	Black Banjo Bolt M12X1.25 / 20 mm Long
63000-15	Black Banjo Bolt M12X1.25 / 24 mm Long
63000-16	Black Banjo Bolt M12X1.25 / 24 mm Long
63000-17	Black Banjo Bolt M12X1.5 / 20 mm Long
63000-18	Black Banjo Bolt M14X1.25 / 22 mm Long
63000-19	Black Banjo Bolt M14X1.5 / 22 mm Long
63000-20	Black Banjo Bolt M16X1.5 / 24 mm Long
63000-21	Black Banjo Bolt M16X1.5 / 34 mm Long
63000-22	Black Banjo Bolt 7/16-24 / 19 mm Long
63000-23	Black Banjo Bolt 1/2-20 / 12 mm Long
63000-24	Black Banjo Bolt 9/16-20 / 23 mm Long
63000-25	Black Banjo Bolt 9/16-24 / 23 mm Long
63000-26	Black Banjo Bolt 5/8X20 / 24 mm Long

Banjo to Barb



Part Number	AN Size	AN Size
63200-1	9.3mm	10.5mm
63200-2	9.3mm	14.5mm
63200-3	9.3mm	12.5mm



Part Number	Product Description
630025	Banjo To Barb Kit- Black Banjo Bolt Black 24 mm Long



Stainless Steel Braided Hose (OLD SCHOOL)



E85

Part Number	AN Size	I.D.		O.D.	
1000-04	AN4	7/32"	5.4mm	7/16"	11.2mm
1000-06	AN6	11/32"	8.7mm	9/16"	13.8mm
1000-08	AN8	7/16"	11.1mm	11/16"	17.1mm
1000-10	AN10	9/16"	14.2mm	53/64"	20.8mm
1000-12	AN12	11/16"	17.4mm	31/32"	24.4mm
1000-16	AN16	7/8"	22.2mm	13/64"	30.5mm
1000-20	AN20	1-1/8"	28.5mm	1-13/32"	35.81mm

PRO-B1500 Premium Black Stainless Steel Braided Hose (Old School Hose but painted black)



E85

Part Number	AN Size	I.D.		O.D.	
1500-04	AN4	7/32"	5.4mm	7/16"	11.2mm
1500-06	AN6	11/32"	8.7mm	9/16"	13.8mm
1500-08	AN8	7/16"	11.1mm	11/16"	17.1mm
1500-10	AN10	9/16"	14.2mm	53/64"	20.8mm
1500-12	AN12	11/16"	17.4mm	31/32"	24.4mm
1500-16	AN16	7/8"	22.2mm	13/64"	30.5mm
1500-20	AN20	1-1/8"	28.5mm	1-13/32"	35.81mm

Pro-B 2000 Series Black Nylon Braided Hose



E85

Part Number	AN Size	I.D.		O.D.	
2000-04	AN4	7/32"	5.4mm	7/16"	11.2mm
2000-06	AN6	11/32"	8.7mm	9/16"	13.8mm
2000-08	AN8	7/16"	11.1mm	11/16"	17.1mm
2000-10	AN10	9/16"	14.2mm	53/64"	20.8mm
2000-12	AN12	11/16"	17.4mm	31/32"	24.4mm
2000-16	AN16	7/8"	22.2mm	13/64"	30.5mm
2000-20	AN20	1-1/8"	28.5mm	1-13/32"	35.81mm

TECH TIP Due to the fact that there are a number of unpublished additives being put in today's fuel, it is impossible to predict how it will impact the inner liner of PRO-B and other hoses, so I highly advise that you look at your hose at least once a year to inspect the inner and outer wall of your hoses.

TECH TIP After the hose have been cut and the fittings install or crimped, rubber debris, as well as metal particles resulting from the assembly process, are likely to enter the fuel system if you don't.

Please blow you hose to ensure it clean before use.



- E85 will permeate through this line when stagnant for extended periods of time
- Iso compatible with Oil, Coolant, Water
- Fuel Gasoline, Diesel and light duty E85 use (Gas Pump)

PTFE Stainless Steel Braided Hose



E85

Part Number	AN Size	I.D.		O.D.	
3000-03	AN3	9/64"	3.56mm	1/4"	6.35mm
3000-04	AN4	3/16"	4.83mm	19/64"	7.62mm
3000-06	AN6	21/64"	8.13mm	27/64"	10.92mm
3000-08	AN8	27/64"	10.67mm	35/64"	13.72mm
3000-10	AN10	33/64"	12.95mm	5/8"	16mm
3000-12	AN12	41/64"	16.26mm	49/64"	19.3mm
3000-16	AN16	7/8"	22.22mm	1-1/32"	26.16mm
3000-20	AN20	1-1/8"	28.57mm	1-9/32"	32.77mm

PTFE Stainless Steel Black Nylon Braided Hose



E85

Part Number	AN Size	I.D.		O.D.	
4000-04	AN4	7/32"	5.4mm	7/16"	11.2mm
4000-06	AN6	11/32"	8.7mm	9/16"	13.8mm
4000-08	AN8	7/16"	11.1mm	11/16"	17.1mm
4000-10	AN10	9/16"	14.2mm	53/64"	20.8mm
4000-12	AN12	11/16"	17.4mm	31/32"	24.4mm
4000-16	AN16	7/8"	22.2mm	13/64"	30.5mm
4000-20	AN20	1-1/8"	28.5mm	1-13/32"	35.81mm

3000 and 4000 Series PTFE Stainless Steel Braided Hose

Part number	AN Size	Inner Dia.(I.D.)		Outer Dia (O.D.)		Max Operating PPSI	Burst Operat- ing PPSI	Min Bend Radius
		Inc	MM	Inc	MM			
3000 & 4000	3	9/64"	3.56MM	1/4"	6.35MM	4000 PSI	12000 PSI	2"
3000 & 4000	4	3/16"	4.83MM	5/16"	8.00MM	4000 PSI	12000 PSI	2"
3000 & 4000	6	21/64"	8.13MM	27/64"	10.92MM	3000 PSI	10000 PSI	3"
3000 & 4000	8	27/64"	10.67MM	35/64"	13.72MM	2500 PSI	8000 PSI	5.25'
3000 & 4000	10	33/64"	12.95MM	5/8"	16.00MM	2500 PSI	6000 PSI	6.5"
3000 & 4000	12	41/64"	16.26MM	49/64"	19.30MM	1000 PSI	4000 PSI	7.5"
3000 & 4000	16	7/8"	22.22MM	1 1/32"	26.16MM	1000 PSI	3000 PSI	8.5"
3000 & 4000	20	1 1/8"	28.57MM	1 9/32"	32.77MM	1000 PSI	2500 PSI	9.25"

E85



Blue Push On Blue hose



E85

Part Number	AN Size	I.D.	O.D.
5000-04	AN4	6.4mm 1/4"	12mm 15/32"
5000-06	AN6	9.5mm 3/8"	15.8mm 5/8"
5000-08	AN8	12.7mm 1/2"	19.1mm 3/4"
5000-10	AN10	15.9mm 5/8"	22.9mm 29/32"
5000-12	AN12	19.1mm 3/4"	26.2mm 1 1/32"

Black Push On Black hose



E85

Part Number	AN Size	I.D.	O.D.
5400-04	AN4	6.4mm 1/4"	12mm 15/32"
5400-06	AN6	9.5mm 3/8"	15.8mm 5/8"
5400-08	AN8	12.7mm 1/2"	19.1mm 3/4"
5400-10	AN10	15.9mm 5/8"	22.9mm 29/32"
5400-12	AN12	19.1mm 3/4"	26.2mm 1 1/32"

5000 & 5400 Push on Hose

Part number	AN Size	Inner Dia. (I.D.)		Outer Dia (O.D.)		Max Operating PPSI	Min Bend Radius
		Inc	MM	Inc	MM		
CPR 5000 & 5400	4	1/4"	6.35mm	15/32"	11.94mm	250 PSI	2.5"
CPR 5000 & 5400	6	3/8"	7.9mm	5/8"	16.0mm	250 PSI	3.0"
CPR 5000 & 5400	8	1/2"	12.7mm	3/4"	19.05mm	250 PSI	5.0"
CPR 5000 & 5400	10	5/8"	16.0mm	15/16"	23.88mm	250 PSI	6.0"
CPR 5000 & 5400	12	3/4"	19.05mm	1.0"	25.4mm	250 PSI	7.0"



"A"
AN
04



"B"
ORB
06

EX 6070-04-06

4 AN to ORB MALE FLARE ADAPTERS



Part Number	"A" AN	"B"ORB AN
6070-04	AN4	-4 ORB
6070-0406	AN4	-6 ORB
6070-0408	AN4	-8 ORB
6070-0410	AN4	-10 ORB

12 AN to ORB MALE FLARE ADAPTERS



Part Number	"A" AN	"B"ORB AN
6070-12	AN12	-12 ORB
6070-1208	AN12	-8 ORB
6070-1210	AN12	-10 ORB
6070-1216	AN12	-16 ORB

6 AN to ORB MALE FLARE ADAPTERS



Part Number	"A" AN	"B"ORB AN
6070-06	AN6	-6 ORB
6070-0604	AN6	-4 ORB
6070-0606	AN6	-6 ORB
6070-0608	AN6	-8 ORB
6070-0610	AN6	-10 ORB

16 AN to ORB MALE FLARE ADAPTERS



Part Number	"A" AN	"B"ORB AN
6070-16	AN16	-12 ORB
6070-1610	AN16	-10 ORB
6070-1612	AN16	-12 ORB
6070-1620	AN16	-20 ORB

8 AN to ORB MALE FLARE ADAPTERS



Part Number	"A" AN	"B"ORB AN
6070-08	AN8	-8 ORB
6070-0806	AN8	-6 ORB
6070-0810	AN8	-10 ORB
6070-0812	AN8	-12 ORB

20 AN to ORB MALE FLARE ADAPTERS



Part Number	"A" AN	"B"ORB AN
6070-20	AN20	-20 ORB
6070-2016	AN20	-16 ORB

10 AN to ORB MALE FLARE ADAPTERS



Part Number	"A" AN	"B"ORB AN
6070-10	AN10	-10 ORB
6070-1006	AN10	-6 ORB
6070-1008	AN10	-8 ORB
6070-1012	AN10	-12 ORB
6070-1016	AN10	-16 ORB

AN Flare Union Straight Adapter Fitting



Part Number	AN Size	AN Size
65000-03	AN3	AN3
65000-04	AN4	AN4
65000-06	AN6	AN6
65000-08	AN8	AN8
65000-10	AN10	AN10
65000-12	AN12	AN12
65000-16	AN16	AN16
65000-20	AN20	AN20

6030 FLARE AN TO NPT

AN FLARE TO METRIC ADAPTERS



Too Tight and Leaking

One of the most common ways the seat or cone on aluminum fittings and adapters can be easily damaged is by over-tightening (see **Torque specifications information on Page 26**). If a fitting has been over-tightened, it may be damaged and prone to leaks. Dirt and debris on the sealing surface are also common sources of leaks

NPT to AN3 Male Flare Adapter Straight



Part Number	NPT	AN
603001	1/8"NPT	AN3
603002	1/4"NPT	AN3
603003	3/8"NPT	AN3

NPT to AN10 Male Flare Adapter Straight



Part Number	NPT	AN Size
603016	3/8"NPT	AN10
603017	1/2"NPT	AN10
603018	3/4" NPT	AN10

NPT to AN4 Male Flare Adapter Straight



Part Number	NPT	AN Size
603004	1/8"NPT	AN4
603005	1/4"NPT	AN4
603006	3/8"NPT	AN4

NPT to AN12 Male Flare Adapter



Part Number	NPT	AN Size
603019	1/2"NPT	AN12
603020	3/4"NPT	AN12
603021	1" NPT	AN12

NPT to AN6 Male Flare Adapter Straight



Part Number	NPT	AN Size
603007	1/8"NPT	AN6
603008	1/4"NPT	AN6
603009	3/8"NPT	AN6
603010	1/2"NPT	AN6
603011	3/4"NPT	AN6

NPT to AN16 Male Flare Adapter Straight



Part Number	NPT	AN Size
603022	1" NPT	AN16
603023	3/4: NPT	AN16
603024	1-1/4" NPT	AN16

NPT to AN8 Male Flare Adapter Straight



Part Number	NPT	AN Size
603012	1/4"NPT	AN8
603013	3/8"NPT	AN8
603014	1/2"NPT	AN8
603015	3/4"NPT	AN8

NPT to AN20 Male Flare Adapter Straight



Part Number	NPT	AN Size
603025	1-1/4" NPT	AN20
603026	1" NPT	AN20

AN



NPT

Part Number 603010

METRIC to JIC 37° FLARE AN

METRIC TO AN

NPT to AN 3 Male Flare Adapter



Part Number	METRIC	AN Size
641001	M6*1.0	AN3
641002	M8*1.0	AN3
641003	M8*1.25	AN3
641004	M10*1.0	AN3
641005	M10*1.5	AN3
641006	M12*1.0	AN3
641007	M10*1.25	AN3
641008	M12*1.25	AN3

NPT to AN 8 Male Flare Adapter



Part Number	METRIC	AN Size
641034	M10*1.0	AN8
641035	M10*1.25	AN8
641036	M10*1.50	AN8
641037	M12*1.25	AN8
641038	M12*1.5	AN8
641039	M12*1.5	AN8
641040	M14*1.25	AN8
641041	M14*1.5	AN8
641042	M16*1.5	AN8
641043	M18*1.5	AN8
641044	M20*1.5	AN8
641045	M22*1.5	AN8
641046	M24*1.5	AN8

NPT to AN 4 Male Flare Adapter



Part Number	METRIC	AN Size
641009	M6*1.0	AN4
641010	M8*1.0	AN4
641011	M8*1.25	AN4
641012	M10*1.0	AN4
641013	M10*1.25	AN4
641014	M10*1.50	AN4
641015	M12*1.0	AN4
641016	M12*1.25	AN4
641017	M12*1.50	AN4
641018	M14*1.25	AN4
641019	M14*1.50	AN4

NPT to AN 10 Male Flare Adapter



Part Number	METRIC	AN Size
641047	M12*1.0	AN10
641048	M12*1.25	AN10
641049	M12*1.5	AN10
641050	M14*1.5	AN10
641051	M16*1.5	AN10
641052	M18*1.5	AN10
641053	M20*1.5	AN10
641054	M22*1.5	AN10
641055	M24*1.5	AN10

NPT to AN 6 Male Flare Adapter



Part Number	METRIC	AN Size
641020	M10*1.00	AN6
641021	M10*1.25	AN6
641022	M10*1.50	AN6
641023	M12*1.0	AN6
641024	M12*1.5	AN6
641025	M12*1.25	AN6
641026	M12*1.5	AN6
641027	M14*1.5	AN6
641028	M14*1.25	AN6
641029	M16*1.5	AN6
641030	M18*1.5	AN6
641031	M20*1.5	AN6
641032	M22*1.5	AN6
641033	M24*1.5	AN6

NPT to AN 12 Male Flare Adapter



Part Number	METRIC	AN Size
641056	M12*1.0	AN12
641057	M12*1.25	AN12
641058	M12*1.5	AN12
641059	M14*1.5	AN12
641060	M16*1.5	AN12
641061	M18*1.5	AN12
641062	M20*1.5	AN12
641063	M22*1.5	AN12
641064	M24*1.5	AN12

JIC 37° FLARE AN

Union 45 and 90 Degree Swivel Adapter

45° -AN Black Male to AN Female Swivel



Part Number	AN Size	AN Size
28145-03	AN3	AN3
28145-04	AN4	AN4
28145-06	AN6	AN6
28145-08	AN8	AN8
28145-10	AN10	AN10
28145-12	AN12	AN12
28145-16	AN16	AN16

90° MALE / FEMALE FLARE SWIVEL



Part Number	Male AN Size	Female AN Size
28190-03	AN3	AN3
28190-04	AN4	AN4
28190-06	AN6	AN6
28190-08	AN8	AN8
28190-10	AN10	AN10
28190-12	AN12	AN12
28190-16	AN16	AN16

90° Adapter Male AN to Male Swivel AN ORB



Part Number	AN	AN ORB
29190-0604	AN6	AN4
29190-06	AN6	AN6
29190-0608	AN6	AN8
29190-0610	AN6	AN10
29190-0624	AN6	9/16x24
29190-09818	AN6	5/8x18

90° Adapter Male AN to Male Swivel AN ORB



Part Number	AN	AN ORB
29190-1008	AN10	AN8
29190-10	AN10	AN10
29190-1012	AN10	AN12

90° Adapter Male AN to Male Swivel AN ORB



Part Number	AN	AN ORB
29190-0806	AN8	AN6
29190-08	AN8	AN8
29190-0810	AN8	AN10
29190-0820	AN8	7/8x20

90° Adapter Male AN to Male Swivel AN ORB



Part Number	AN	AN ORB
29190-1210	AN12	AN10
29190-12	AN12	AN12
29190-1612	AN16	AN12
29190-16	AN16	AN16

Union Male Flare Straight Fitting



Part Number	AN Size	AN Size
66000-03	AN3	AN3
66000-04	AN4	AN4
66000-06	AN6	AN6
66000-08	AN8	AN8
66000-10	AN10	AN10
66000-12	AN12	AN12
66000-16	AN16	AN16
66000-20	AN20	AN20

Union Male Flare Straight Fitting



Part Number	AN Size	AN Size
65000-03	AN3	AN3
65000-04	AN4	AN4
65000-06	AN6	AN6
65000-08	AN8	AN8
65000-10	AN10	AN10
65000-12	AN12	AN12
65000-16	AN16	AN16
65000-20	AN20	AN20

Union AN Female Straight Swivel Reducer Fitting



Part Number	AN Size	AN Size
67000-0608	AN6	AN8
65000-0810	AN8	AN10
65000-1012	AN10	AN12

JIC 37° FLARE AN TO NPT

AN TO NPT STRAIGHT

45° AN FLARE TO NPT ADAPTER FITTING



Part Number	A AN	B NPT
28450-318	AN3	1/8"NPT
28450-314	AN3	1/4"NPT
28450-418	AN4	1/8"NPT
28450-414	AN4	1/4"NPT
28450-438	AN4	3/8"NPT

90° AN FLARE TO NPT ADAPTER FITTING



Part Number	A AN	B NPT
28900-318	AN3	1/8"NPT
28900-314	AN3	1/4"NPT
28900-418	AN4	1/8"NPT
28900-414	AN4	1/4"NPT
28900-438	AN4	3/8"NPT
28900-618	AN6	1/8"NPT
28900-614	AN6	1/4"NPT
28900-638	AN6	3/8"NPT
28900-612	AN6	1/2"NPT
28900-814	AN8	1/4"NPT
28900-838	AN8	3/8"NPT
28900-812	AN8	1/2"NPT
28900-834	AN8	3/4"NPT
28900-1038	AN10	1/2"NPT
28900-1012	AN10	3/8"NPT
28900-1034	AN10	3/4"NPT
28900-1234	AN12	3/4"NPT
28900-1212	AN12	1/2"NPT
28900-1634	AN16	3/4"NPT
28900-1601	AN16	1"NPT

45° AN FLARE TO NPT ADAPTER FITTING



Part Number	AN	NPT
CPR 28450-1038	AN10	3/8"NPT
CPR 28450-1012	AN10	1/2"NPT
CPR 28450-1034	AN10	3/4"NPT
CPR 28450-1234	AN12	3/4"NPT
CPR 28450-1212	AN12	1/2"NPT
CPR 28450-1601	AN16	1"NPT
CPR 28450-1634	AN16	3/4"NPT
CPR 28450-2001	AN20	1"NPT

MALE NPT TO SWIVEL FEMALE AN STRAIGHT

45° AN FLARE TO NPT ADAPTER FITTING



Part Number	A AN	B NPT
28450-618	AN6	1/8"NPT
28450-614	AN6	1/4"NPT
28450-638	AN6	3/8"NPT
28450-612	AN6	1/2"NPT
28450-814	AN8	1/4"NPT
28450-838	AN8	3/8"NPT
28450-812	AN8	1/2"NPT
28450-834	AN8	3/4"NPT
28450-1038	AN10	3/8"NPT
28450-1012	AN10	1/2"NPT
28450-1034	AN10	3/4" NPT



Part Number	A AN	B NPT
29900-418	AN4	1/8"NPT
29900-414	AN4	1/4"NPT
29900-618	AN6	1/8"NPT
29900-614	AN6	1/4"NPT
29900-638	AN6	3/8"NPT
29900-814	AN8	1/4"NPT
29900-838	AN8	3/8"NPT
29900-812	AN8	1/2"NPT
29900-1038	AN10	3/8"NPT
29900-1012	AN10	1/2"NPT
29900-1212	AN12	1/2"NPT
29900-1234	AN12	3/4"NPT
29900-1634	AN16	3/4"NPT
29900-1601	AN16	1"NPT

Quick Disconnect EFI Adapter Fitting

Female Quick Disconnect AN to Female Adapters



Part Number	AN	FEMALE
311-6516	AN6	5/16"
311-0638	AN6	3/8"
311-0838	AN8	3/8"

Female Quick Disconnect AN to Fuel Rail Fitting w/ lock



Part Number	AN	FEMALE (LOCK)
312-6516	AN6	5/16"
312-8516	AN8	5/16"
312-0638	AN6	3/8"
312-0838	AN8	3/8"

90° Female Quick Disconnect AN to Female Adapters



Part Number	Angle	AN	Female
390-6516	90°	AN6	5/16"
390-0638	90°	AN6	3/8"
390-0838	90°	AN6	3/8"

Male Quick Disconnect AN to Male Adapters



Part Number	AN	MALE
411-6516	AN6	5/16"
411-0638	AN6	3/8"
411-0838	AN8	3/8"
411-1038	AN10	3/8"

Plastic Insert for Quick Disconnect EFI Adapter,



Part Number	ID
321-0516	5/16"
321-0038	3/8"

Fit 311-XXXX , 312-XXXX and 390-XXXX

Fuel Rail Fitting Adapters



Part Number	Description	AN
611-1993	AN6 Ford Small Female spring lock	AN6
611-1993	AN8 Ford Large Female spring lock	AN8

EFI 1986-1998 Male Fox Body fuel system



Part Number	Description	AN
511-1985	AN6 Male Pressure Side (Feed) .555 Shank	AN6
511-1986	AN6 Male Return Side .435" Shank	AN6
511-1987	AN8 Male Pressure Side (Feed) .555 Shank	AN8

Black NPT AND ORB Plugs 6061 Aluminum

NPT Hex Head Pipe Plugs



Part Number	Head	NPT
33001-18	Hex	1/8"
33001-14	Hex	1/4"
33001-38	Hex	3/8"
33001-12	Hex	1/2"
33001-37	Hex	3/4"
33001-01	Hex	1"

'Plug NPT Allen Hex Head Plug Black



Part Number	Head	NPT
33100-16	Allen	1/16"
33100-18	Allen	1/8"
33100-14	Allen	1/4"
33100-38	Allen	3/8"
33100-12	Allen	1/2"
33100-34	Allen	3/4"
33100-01	Allen	1"

Port Plug -Hex Head With ORB Thread



Part Number	Head	ORB
320001-03	Hex	AN3
320002-04	Hex	AN4
320003-06	Hex	AN6
320004-08	Hex	AN8
320005-10	Hex	AN10
320006-12	Hex	AN12
320007-16	Hex	AN16
320008-20	Hex	AN20

ORB Socket Plug with O-Ring Black



Part Number	Head	AN ORD
321001-03	Button	AN3
321002-04	Button	AN4
321003-06	Button	AN6
321004-08	Button	AN8
321005-10	Button	AN10
321006-12	Button	AN12
321007-16	Button	AN16
321001-20	Button	AN20

Cap Flare Black AN



Part Number	Head	Female AN Size
321201-03	Caps	AN3
321202-04	Caps	AN4
321203-06	Caps	AN6
321204-08	Caps	AN8
321205-10	Caps	AN10
321206-12	Caps	AN12
321207-16	Caps	AN16

Metric port plug with crush washer



Part Number	Head	NPT
323-1010	Hex	M10 x 1.0
323-10125	Hex	M10 x 1.25
323-1215	Hex	M12 x 1.5
323-1415	Hex	M14 x 1.5
323-1615	Hex	M16 x 1.5
323-1815	Hex	M18 x 1.5

Bulkhead

AN TO AN

CPR Bulkhead AN adaptors come in Straight, 45°, 45°, 90°

Straight Bulkhead Fitting



Part Number	AN SIZE	AN Size
393000-03	AN3	AN3
393000-04	AN4	AN4
393000-06	AN6	AN6
393000-08	AN8	AN8
393000-10	AN10	AN10
393000-12	AN12	AN12
393000-16	AN16	AN16

45° Bulkhead Fitting



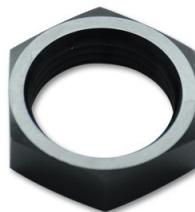
Part Number	AN SIZE	AN Size
393045-03	AN3	AN3
393045-04	AN4	AN4
393045-06	AN6	AN6
393045-08	AN8	AN8
393045-10	AN10	AN10
393045-12	AN12	AN12
393045-16	AN16	AN16

90° Bulkhead Fitting



Part Number	AN SIZE	AN Size
393090-03	AN3	AN3
393090-04	AN4	AN4
393090-06	AN6	AN6
393090-08	AN8	AN8
393090-10	AN10	AN10
393090-12	AN12	AN12
393090-16	AN16	AN16

Bulkhead Nut



Part Number	AN SIZE
393100-03	AN3
393100-04	AN4
393100-06	AN6
393100-08	AN8
393100-10	AN10
393100-12	AN12
393100-16	AN16
393100-20	AN20

Fuel Cell Tip Over Valves, Roll Over Valves, Bulkhead Fitting, Aluminum, Black Anodized, AN Female Threads

Hex Black Roll Over Valve



Part Number	AN	AN
74-1006	AN3	AN3
74-1008	AN4	AN4
74-1010	AN6	AN6
74-1012	AN8	AN8
74-1016	AN10	AN10

Fuel Cell Bulkhead Adapter Fittings



Part Number	AN	AN
76-1006	AN3	AN3
76-1008	AN4	AN4
76-1010	AN6	AN6
76-1012	AN8	AN8
76-1016	AN10	AN10

NPT and O2 Weld Bungs, V-Clamp

NPT bung round style weld bungs



Stainless	Aluminum	Steel	size
34000-18SS	34000-18AL	34000-18ST	1/8"
34000-14SS	34000-14AL	34000-14ST	1/4"
34000-38SS	34000-38AL	34000-38ST	3/8"
34000-12SS	34000-12AL	34000-12ST	1/2"
34000-34SS	34000-34AL	34000-34ST	3/4"

O2 Oxygen Sensor Weld Bung M18*1.5

3411814-05

Part Number	Description	Material
3411814-01	O2 SS Oxygen Sensor No Stepped Weld In Bung M18*1.5	SS
3411814-02	O2 SS Oxygen Sensor Stepped Weld In Bung M18*1.5	SS
3411814-03	O2 SS Oxygen Sensor 1/2 Notched Weld In Bungs M18*1.5	SS
3411814-45	O2 SS Oxygen Sensor 45 degree Weld IN Bungs M18*1.6	SS
3411814-05	Oxygen Sensor Heat Sink Finned Weld In M18 x 1.5mm	SS
3411814-06	O2 Oxygen Sensor Bung Plug Hex Head w copper ring	SS
3411814-07	O2 Oxygen Sensor Socket Bung Plug Hex Head	SS
3411814-08	Wideband AFR O2 BUNG	SS



3411814-45



V-Band Clamp Assembly and T-Bolt

Stainless	Aluminum	size
188802-02	198802-02	2"
188802-25	198802-25	2.5"
188802-03	198802-03	3"
188802-35	198802-35	3.5"
188802-04	198802-04	4 "
188802-45	198802-45	4.5"
188802-05	198802-05	5"

Part Number	Description	Material
388802-02	T-bolt	SS 304



See If information page 26

Natural Aluminum, Steel or Stainless Weld-On Male AN Fitting AN



Part Number	Material	AN	Part Number	Material	AN	Part Number	Material	AN
350003-AL	Aluminum	AN3	360003-ST	Steel	AN3	370003-SS	SS	AN3
350004-AL	Aluminum	AN4	360004-ST	Steel	AN4	370004-SS	SS	AN4
350006-AL	Aluminum	AN6	360006-ST	Steel	AN6	370006-SS	SS	AN6
350008-AL	Aluminum	AN8	360008-ST	Steel	AN8	370008-SS	SS	AN8
350010-AL	Aluminum	AN10	360010-ST	Steel	AN10	370010-SS	SS	AN10
350012-AL	Aluminum	AN12	360012-ST	Steel	AN12	370012-SS	SS	AN12
350016-AL	Aluminum	AN16	360016-ST	Steel	AN16	370016-SS	SS	AN16
350020-AL	Aluminum	AN20	360020-ST	Steel	AN20	370020-SS	SS	AN20

V-Band Flange Assemblies featuring the innovative H-locking design

V-Band Flange Assemblies		Tube OD
kit SS	Kit Alum	Inch
188802-02	198802-02	2.00
188802-25	198802-25	2.50
188802-03	198802-03	3.00
188802-35	198802-35	3.50
188802-04	198802-04	4.00
188802-45	198802-45	4.50
188802-05	198802-05	5.00
188802-06	198802-06	6.00



Stainless Steel V-Band Flanges (Individual)		Tube OD
Female	Male	Inch
188701-2	188702-02	2.00
188701-3	188702-03	2.50
188701-4	188702-04	3.00
188701-5	188702-05	3.50
188701-6	188702-06	4.00
188701-7	188702-07	4.50
188701-8	188702-08	5.00
188701-9	188702-09	6.00



Aluminum V-Band Flanges (Individual)		Tube OD
Female	Male	Inch
198701-2	198702-02	2.00
198701-3	198702-03	2.50
198701-4	198702-04	3.00
198701-5	198702-05	3.50
198701-6	198702-06	4.00
198701-7	198702-07	4.50
198701-8	198702-08	5.00
198701-9	198702-09	6.00



Clamps	T-Bolt	O-ring
188600-02	388802-02	2.00
188600-25	388802-02	2.50
188600-03	388802-02	3.00
188600-35	388802-02	3.50
188600-04	388802-02	4.00
188600-45	388802-02	4.50
188600-05	388802-02	5.00
188600-06	388802-02	6.00



AN TEE - FEMALE SWIVEL ON MIDDLE



Part Number	Male AN Size	Female AN Middle
28200-03	AN3	AN3
28200-04	AN4	AN4
28200-06	AN6	AN6
28200-08	AN8	AN8
28200-10	AN10	AN10
28200-12	AN12	AN12
28200-16	AN16	AN16

AN TEE- FEMALE SWIVEL ON SIDE



Part Number	Male AN Size	Female AN Side
28300-03	AN3	AN3
28300-04	AN4	AN4
28300-06	AN6	AN6
28300-08	AN8	AN8
28300-10	AN10	AN10
28300-12	AN12	AN12
28300-16	AN16	AN16

AN Tee - 3 Male TEE Fittings



Part Number	Male AN Size	Male AN Size
28400-03	AN3	AN3
28400-04	AN4	AN4
28400-06	AN6	AN6
28400-08	AN8	AN8
28400-10	AN10	AN10
28400-12	AN12	AN12
28400-16	AN16	AN16

Bulkhead TEE - Male Middle Branch



Part Number	AN SIZE	AN Size
394000-03	AN3	AN3
394000-04	AN4	AN4
394000-06	AN6	AN6
394000-08	AN8	AN8
394000-10	AN10	AN10
394000-12	AN12	AN12
394000-16	AN16	AN16
394000-20	AN20	AN20

3 AN Male Y-Block



Part Number	AN	2 X AN
6000-333	AN3	AN3
6000-433	AN3	AN3
6000-444	AN4	AN4
6000-644	AN4	AN4
6000-666	AN6	AN6
6000-866	AN6	AN6
6000-888	AN8	AN8
6000-106	AN6	AN6
6000-108	AN8	AN8
6000-1010	AN10	AN10
6000-128	AN12	AN8
6000-1210	AN10	AN10
6000-1212	AN12	AN12
6000-1616	AN16	AN16

COMING SOON



3/8 NPT TO AN6 FEMALE SWIVEL ON MIDDLE TO MALE AN6

IN-LINE HIGH FLOW FUEL FILTER

When superior filtration is paramount for optimal fuel system performance, CPR Racing Filters serve as a cost-effective insurance policy to safeguard your investment. Engineered for applications ranging from 200 to 3000-plus HP, CPR Racing filter assemblies deliver unparalleled flow, coupled with ease of maintenance and installation. The high-flow filters are equipped with an internal magnet to capture fine particles.

Precision CNC-machined from 6061 T6 aircraft aluminum, all filter assemblies feature an O-ring for secure sealing in high-pressure applications. Both the inlet and outlet are ORB, and the stainless steel element is reusable and washable, ensuring long-lasting durability

HIGH FLOW IN-LINE FUEL FILTER



Part Number	ORB Port	Size	Element Micron (SS)
200208-60	AN8	2.25 X 5.5	60
200208-60	AN8	2.25 X 5.5	100
200210-60	AN10	2.25 X 5.5	60
200210-100	AN10	2.25 X 5.5	100
200212-60	AN12	2.4 X 7	60
200212-100	AN12	2.4 X 7	100
200214-60	3/8 NPT	1.25X 4.75	60
210345-16	16 AN	2.3X 8	BA Oil 45

REPLACEMENT FILTER ELEMENTS



Part Number	Element Replace	Suits
300210-40	40 Micron Stainless Steel	200210-40
300210-60	60 Micron Stainless Steel	200210-60
300210-100	100 Micron Stainless Steel	200210-100
300212-40	40 Micron Stainless Steel	200212-40
300212-60	60 Micron Stainless Steel	200212-60
300212-100	100 Micron Stainless Steel	200212-100
300214-60	60 Stainless Steel	200214-60
300345-45	BA Oil 45 SS	210345-16

37° SS Inline AN Flare Filter and Turbocharger Oil Filter / Fuel Filter Set



ger Oil Filter/Fuel Filter Set is crafted from durable 6061 Aluminum Alloy. With a compact e easily installable in tight spaces. The set includes three filters (30, 80, and 150 micron) r engine oil, fuel, or transmission fluid. The fittings are versatile and customizable, coming in and 8AN to meet your preferences

Choosing the Right Micron Filter:

- The 30-micron element is ideal for lightweight engine oil or pump gas.
- The 80-micron element is recommended for heavy-weight engine oil, diesel, alcohol, or ethanol fuel.
- The 150-micron element is designed for use with power steering and transmission oil.

Includes:

(3) Fittings, (3) Filters (1) O-ring

Turbocharger Oil Filter / Fuel Filter Set

Part Number	An	Element Micron
300206-03	AN3	30/80/150 micron
300206-04	AN4	30/80/150 micron
300206-06	AN6	30/80/150 micron
300206-08	AN8	30/80/150 micron

37° SS Inline AN Flare Filter

Compact 250-micron filters effortlessly slide into your AN flare, providing excellent inline filtration. Designed for use with fuel, oil, and water, their 37° taper allows seamless fitment between AN fitting

Part Number	AN Size	Degree	Element
300337-06	AN6	37° SS Inline Filter	250 Micron
300337-08	AN8	37° SS Inline Filter	251 Micron
300337-10	AN10	37° SS Inline Filter	252 Micron
300337-12	AN12	37° SS Inline Filter	253 Micron
300337-16	AN16	37° SS Inline Filter	254 Micron
300337-20	AN20	37° SS Inline Filter	255 Micron



300337-10



FUEL PUMP & FILTER BRACKETS

Dual or Single Bracket 2 Rubbers Isolators

Made from 6061-T6 Aluminum. Great for dual or Single clamping for fuel filters and/or fuel pumps (EFI Fuel and filter) from ID 59MM TO 61 MM Comes with rubber insert.

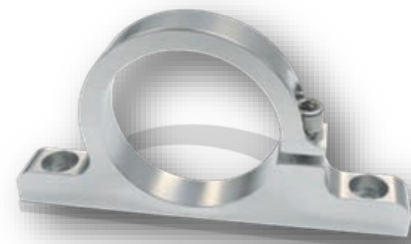
DAUL BRACKETS		
Part Number	Size ID	Size ID
130420-55	61 mm	2 1/2 "

SINGLE BASKETS		
Part Number	Size ID	Size ID
130205-59	59.2 mm	2.33"
130305-61	61.0 mm	2 1/2"



The most popular brackets Part Number 130400-50 that is made from 6061-T6 aluminum. CPR Racing has

Part Number	ID Inch	ID mm
130400-31	1.25	31mm
130400-61	2.5	61mm
130400-50	2	50mm
130400-55	2.16	55mm
130420-55	2.5	61mm



Polish Billet Signal Inline Filter, Stox,

Aluminum Cushion P-Clamps

Part Number	AN	INCH ID
73-0316	AN03	3/16"
73-0014	AN03	1/4"
73-0516	AN04	5/16"
73-0038	AN05	3/8"
73-0012	AN06	1/2"
73-0058	AN08	5/8"
73-0034	AN10	3/4"
73-1000	AN12	1"



Hose clamps

Billet Hose Separators

Part Number	ID MM	INCH ID
70-0316	4.8mm	3/16"
70-0014	6.4mm	1/4"
70-0516	7.9mm	5/16"
70-0038	9.5mm	3/8"
70-0716	11.1mm	7/16"
70-0012	12.7mm	1/2"
70-1732	13.5mm	17/32"
70-0916	14.3mm	9/16"
70-0058	15.9mm	5/8"



Part Number	ID MM	INCH ID
70-1932	15.1mm	19/32"
70-2132	16.7mm	21/32"
70-1116	17.5mm	11/16"
70-0034	19.1mm	3/4"
70-1316	20.6mm	13/16"
70-0078	22.2mm	7/8"
70-1516	23.8mm	15/16"
70-1000	25.4mm	1"
70-1016	27.0mm	1-1/16"

Stepped Down Hose Separators



Part Number	ID MM	INCH ID
72-0406	14.2mm	7/16"
72-0610	15.9mm	7/16"
72-0608	15.9mm	9/16"

Billet P Clamps T-6061 with nut and bolt



Part Number	ID MM	INCH ID
71-0316	4.8mm	3/16"
71-0014	6.4mm	1/4"
71-0516	7.90mm	5/16"
71-0038	9.5mm	3/8"
71-0716	11.1mm	7/16"
71-0012	12.7mm	1/2"
71-0916	14.3mm	9/16"
71-0058	15.9mm	5/8"
71-0034	19.1mm	3/4"
71-1516	24mm	15/16"
71-1316	29.4mm	1-3/16"

Hex hose with clamp



Part Number	AN	INCH ID
74-1004	AN4	AN4
74-1006	AN6	AN6
74-1008	AN8	AN8
74-1010	AN10	AN10
74-1012	AN12	AN12
74-1016	AN16	AN16
74-1020	AN20	AN20

Injector Harnesses Adapters & Electronic components


Introducing the CPR Racing Universal Injector Adapter - your go-to solution for seamless fuel injector connections. With certifications for EV1, EV6, and Nippon Denso, this adapter is engineered with premium components to ensure a reliable connection and proper connector fit.

Key Features:


1. **Universal Compatibility:** Certified for EV1, EV6, and Nippon Denso, making it suitable for a wide range of applications.
2. **Single-piece Design:** Enhances reliability with a single-piece design, ensuring a robust and dependable connection.
3. **Plug-and-Play Installation:** No need for cut and splicing – simply plug in for hassle-free installation.
4. **Quality Construction:** Crafted from high-quality materials to guarantee a proper fit and a durable, dependable connection.

Ensure a smooth and reliable fuel injector system with the CPR Racing Universal Injector Adapter. We've got the adapters you need for any application.


Single-piece




601020



601021




601022




601022

Part number	Description	Style Harness	Style Injectoe
601020	EV1 TO EV6 Fuel Injector Adapter	EV1	EV6
601021	EV6 harness to EV1 Fuel Injector Adapter	EV6	EV1
601022	EV6 to Nippon Denso Single-piece design adapter	Denso	EV6
601023	Nippon Denso to EV6 Adapter	Denso	EV6
601023-8	Nippon Denso to EV6 Adapter set of 8	Denso	EV6


2 Wire design adapter




611020



611021



611022



611024

Part Number	Description	Style harness	Style injector
611020	EV1 TO EV6 2 Wire design adapter	Jetronic/EV1	USCAR /EV6
611021	EV6 TO EV1 2 Wire design adapter	USCAR /EV6	Jetronic/EV1
611022	Mini Multec 2 to USCAR /EV6 (2 Wire design adapter)	Multec 2	USCAR /EV6
611023	USCAR /EV6 to Mini Multec (2 Wire design adapter)	USCAR /EV6	Multec 2
611024	Nippon Denso to Jetronic/EV1 (2 Wire design adapter)	Nippon Denso	Jetronic/EV1
611025	Jetronic / EV1 TO Nippon Denso (2 Wire design adapter)	Jetronic/EV1	Nippon Denso

Injector Harnesses Adapters & Electronic components

About electrical connectors:

- I. Jetronic is the older style connector, sometimes referred to by the Bosch generation EV1.
- II. The USCAR connector is sometimes referred to as EV6, which is a Bosch generation of injector.

INJECTOR AND 3 PIN CONNECTOR



Part Number	Description
611000	Mini Multec 2 Pin Kit
612000	Nippon Denso Fuel Injector Connector w/ Pin Kit
612006	Male EV6 connector with pin kit
613000	Bosch EV1 fuel injectors with Kit
613090	Bosch EV1 fuel injectors with 90 rubber boot Kit
61-1996	MASS Air Connector (no Pins)
614003	3 pin sensor connector (GT150 Pins)
614090	3 pin sensor connector with 90 rubber boot kit (GT150 Pins)



614001



614002



Part number	Description
6012-753	CPR Universal Fuel Pump Relay Kit. 30 AMP with inline fuse (1)
6012-759	CPR Universal Dual Fuel Pump Relay Kit. 30 AMP relay X 2 with inline fuse
6012-760	CPR Universal Dual Fuel Pump Relay Kit. With Kill switch and inline fuses (2)

Accessory



40-120810



40-333088



40-696088

Part Number	Product Description
40-120810	Fuel Pump Hose Convoluted Tubing 120mm Long ID inlet 8mm ID outlet 10mm
40-333088	Fuel Pump Hose Convoluted Tubing 333 mm Long inlet ID 8mm outlet ID 8mm (P11)
40-696088	Fuel Pump Hose Convoluted Tubing 696 mm Long inlet ID 8mm outlet ID 8mm (P11)

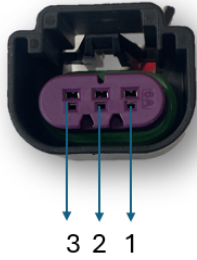


Part	Description
613620	GM Genuine Parts 12570620 Fuel Injector Retainer Kit with Clip
613620-8	GM Genuine Parts 12570620 Fuel Injector Retainer Kit with Clip 8

E85 FLEX FUEL KIT

Electrical Connection

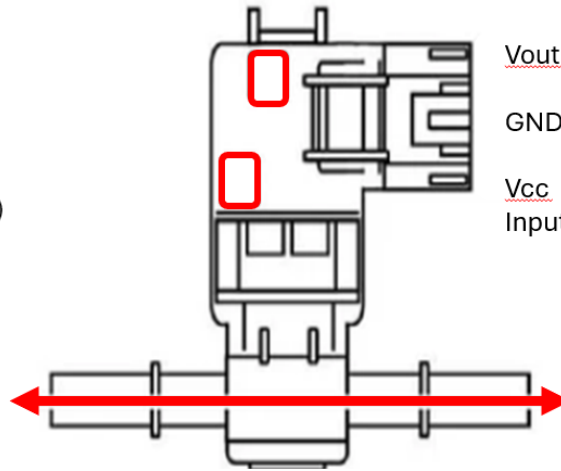
CPR 9200-2000



1. Vcc Bat 12V (Red)
2. Ground (Black)
3. Vout ECU input (white)

Continental VDO Flex Fuel Sensor

CPR 92-13577429



- Vout (Switch 12 V)
- GND (Sensor Ground)
- Vcc (ECU Signal Input)

Fuel flow (Non Direction)

92-13577429



Part Number	Product Description
92-13577429	Continental VDO Flex Fuel Sensor #13577429 SE1004S only
92-13577429-06	Continental VDO Flex Fuel Sensor #13577429 CPR Racing Quick Disconnect Fittings qty 2 -8 AN
92-13577429-08	Continental VDO Flex Fuel Sensor #13577429 CPR Racing Quick Disconnect Fittings qty 2 -6 AN
9200-7379	Continental VDO Flex Fuel Sensor #13577379 SE1003
9200-7394	Continental VDO Flex Fuel Sensor #13577394 SE1002
9200-2000	GM E85 Flex Fuel Housing Connector and 3 pins

FlexFuel Conversion



E85 FlexFuel Conversion – Available for Pre-order now!

PN U-EF-PLUS

Kits

Ls swap Kits



GASOLINE SERVICE & EFI FUEL INJECTOR



Saturated Injector -Most electronic fuel injection (EFI) systems use an ECU with 12 volt saturated circuit drivers. These systems are very inexpensive, simple, and reliable. This type of driver works by supplying 12 volts to the injectors and the ECU turns it on and off to establish a fuel injector pulse. Saturated injectors are generally higher impedance than peak and hold, running in about the 10-16 ohms range. .

We at Creative Performance racing test all injector at
3 bar (PSI 43.5113213) 1 Bar = (14.50377)

500-3001	CPR Racing® # 0280158827 – Bosch 160lb / 1680cc High Impedance Fuel Injector EV1 CNG -Standard Length- 60mm
500-3002	CPR Racing® # 0280158821 – Bosch 210lb/ 2205cc Petrol Methanol 210lb 2200cc High Impedance Fuel Injector Sumitomo -Short 35mm-
500-3004	CPR Racing® # 0280158187 - Bosch 52lb/ 546 High Impedance Fuel Injector EV6 USCAR -Short 35mm-
500-3005	CPR Racing® # 0280158279 - Bosch 52lb/ 546cc High Impedance Fuel Injector EV1 Connector EV14 -Standard Length- 60mm
500-3006	CPR Racing® # 0280158040 Bosch 95lb/ 1000 CC High Impedance Fuel Injector EV1 Short Style Extended Tip
600-4001	CPR Racing® EFI Fuel Injector # F111354 Siemens Deka 46 LB / 483cc High Impedance Fuel Injectors EV6: Square Plug/Jetronic: -Mid Length-
600-4002	CPR Racing® EFI Fuel Injector # 108420 Siemens Deka 42 LB / 441cc High Impedance Fuel Injectors EV1: Square Plug/Jetronic: -Short 48mm-
600-4003	CPR Racing® EFI Fuel Injector # 107961 Siemens Deka 60 LB/630cc High Impedance Fuel Injectors EV1: -Square Plug/Jetronic:
600-4004	CPR Racing® EFI Fuel Injector # 107962 Siemens Deka 60 LB /630cc High Impedance Fuel Injectors EV1: -Square Plug/Jetronic: Short 48mm
600-4005	CPR Racing® EFI Fuel Injector # 108191 Siemens Deka 60 LB / 630cc High Impedance Fuel Injectors EV6 USCAR: -Standard Length-
600-4006	CPR Racing® EFI Fuel Injector # 110324 Siemens Deka 80 LB/ 840cc High Impedance Fuel Injectors EV1: Square Plug/Jetronic: -Standard Length
600-4007	CPR Racing® EFI Fuel Injector # F1114700 Siemens Deka 80 LB/840cc High Impedance Fuel Injectors EV1: Square Plug/Jetronic: -Short 48mm
600-4008	CPR Racing® EFI Fuel Injector # 109991 Siemens Deka 80 LB/840cc High Impedance Fuel Injectors EV6 USCAR: -Standard Length-
600-4009	CPR Racing® EFI Fuel Injector #110333 Siemens Deka 212 LB / 2226 High Impedance Fuel Injectors EV1: Square Plug/Jetronic: -Standard Length-
700-53412	ACDelco GM 217-3412 Sequential 50 LB / 525cc High Impedance Fuel Injector Assembly
80001-01	#GSS282 - Walbro 190lph High Pressure Intank Fuel Pump (Offset Inlet) 85-95 Mustang GT
80001-02	#GSS340 – Walbro 255lph High Pressure Intank Fuel Pump (Center Inlet) 85-95 Mustang GT
80001-03	#GSS341 – Walbro 255lph High Pressure Intank Fuel Pump (Offset Inlet) 85-97 Mustang GT
80001-04	#GSS342 – Walbro 255lph High Pressure Intank Fuel Pump (Offset Inlet) Mustangs 85-97
80001-05	#F90000267 – Walbro 450lph High Pressure Intank Fuel Pump E85
80001-06	#GSL392 – Walbro 255lph High Pressure In Line Fuel Pump (Universal)
80001-07	F90000262 -Walbro 400lph High-Pressure Fuel Pump (Universal)
80001-08	F90000285 - Walbro 525lph High Pressure Fuel Pump (Hellcat)
4000-1168	Walbro 400-1168 Pump Installation Kit for 90000 Walbro Fuel Pumps
9000-044	EFI Bosch 044 (200) High Flow Fuel Pump - 270 LPH
9200-7429	Continental VDO Flex Fuel Sensor #13577429 = SE1004
9200-7379	Continental VDO Flex Fuel Sensor #13577379 = SE1003
9200-7394	Continental VDO Flex Fuel Sensor #13577394 = SE1002
80002-01	TI Automotive FP-BKS1000-4 Brushless Pump and Controller Kit Specifications: 550+ LPH @ 13.5V / 40 psi

About electrical connectors:

- I. Jetronic is the older style connector, sometimes referred to by the Bosch generation EV1.
- II. The USCAR connector is sometimes referred to as EV6, which is a Bosch term for the generation of injector.



EV1 Female Connector



EV1 Female Connector



EV1 Male Connector



EV6 Male Connector

Fuel Pumps

New Bosch 44



In-Tank fuel Pumps



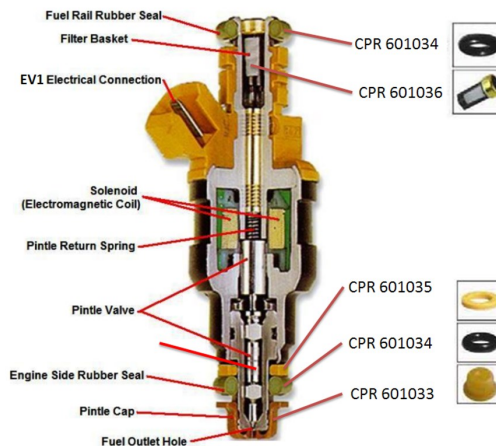
40-120810



614001

80001-01	#GSS282 - Walbro 190lph High Pressure Intank Fuel Pump (Offset Inlet) 85-95 Mustang GT	Offset Inlet
80001-02	#GSS340 - Walbro 255lph High Pressure Intank Fuel Pump (Center Inlet) 85-95 Mustang GT	Offset Inlet
80001-03	#GSS341 - Walbro 255lph High Pressure Intank Fuel Pump (Offset Inlet) 85-97 Mustang GT	Offset Inlet
80001-04	#GSS342 - Walbro 255lph High Pressure Intank Fuel Pump (Offset Inlet) Mustangs 85-97	Offset Inlet
80001-05	#F90000267 - Walbro 450lph High Pressure Intank Fuel Pump E85	
80001-06	#GSL392 - Walbro 255lph High Pressure InLine Fuel Pump (Universal)	Universal
80001-07	F90000262 -Walbro 400lph High-Pressure Fuel Pump (Universal)	Universal
80001-08	F90000285 - Walbro 525lph High Pressure Fuel Pump (Hellcat)	Hellcat
40-1200810	Fuel Pump Hose Convoluted Tubing 120mm Long ID 8mm ID 10mm	ID '8mm -10mm
4000-1168	Walbro 400-1168 Pump Installation Kit for 90000 Walbro Fuel Pumps	Universal
9000-044	EFI Bosch 044 (200) High Flow Fuel Pump - 270 LPH	Universal

Part	Description
601033-1	Injector Pintle Cap
601033-2	O-ring Top Feed Injectors .630 x 197
601033-3	.301 mm, Green O-ring GM
601033-4	Nylon Spacer Yellow
601033-5	Filter MPI
601040-4	4 set Fuel Injector Rebuild/Repair Kit O-Rings
601033-7	Filter MPI Stainless Steel
601033-8	8 set Fuel Injector Rebuild/Repair Kit O-Rings
S22000-1	Rebuild fuel Injector with flow data Sheet
S22000-2	Testing flow rate
S22000-3	Leak Test



Service for injector



S22000-1
CPR Rebuild fuel Injector with flow data Sheet

HEMI Billet Fuel Rail Kits

CPR-Creative Performance Racing introduces the Hemi fuel rail for the 6.4L HEMI engines. When you have the POWER, you will need more fuel. So why not get wicked appearance and performance from your Challenger SRT, Charger, Magnum and 300C by adding a set of CPR Hemi Fuel Rails

440005



440001



401969

Part Number	Description	ID	IN/OUT LET
440000-C	5.7 OR 6.1 Hemi Fuel Rails and 1/8 NPT plug	5/8"	AN8 ORB
440001	5.7 Fuel Rail Kit (with PN 411-6516 & 19100)	5/8"	AN8 ORB
440002	6.1 Fuel Rail Kit (with PN 411-6516 & 19100)	5/8"	AN8 ORB
440003	6.4 Fuel Rail Kit (with PN 411-6516 & 19100)	5/8"	AN8 ORB
440004	2013 + Viper SRT10 Fuel Rail kit	5/8"	AN8 ORB
440005	Hemi Fuel Rails Engine Dress-up Crossover kit	5/8"	AN8 ORB
440000-P	Bogdanovic Signature Purple fuel rails only	5/8"	AN8 ORB
401969	Bogdanovic Signature Series Crossover kit	5/8"	AN8 ORB

Ford Billet Fuel Rail Kits

CPR RACING High Flow Billet Fuel Rails Fits combine 3,000 HP flow capabilities, ORB-08 In and Out Ports with the ORB leak-free sealing. Full 5/8" ID through bore CNC-machined, billet aluminum just the right fit and Show and Go Finish



4601031



4601028



4601028



Part Number	Description	ID	IN/OUT LET
4601021	86-'95 Ford 5.0 Fuel Rail (V1 1/2 Id)	5/8"	AN8 ORB
4601022	86-'95 Ford 5.0 Fuel Rail V.2 5/8 ID	5/8"	AN8 ORB
4601023	1996 - 1998 4.6L 4V Cobra Mustang (mount to lower intake "L Bracket")	5/8"	AN8 ORB
4601024	1996 - 2004 4.6L 2V GT Mustang RETURN systems	5/8"	AN8 ORB
4601025	1999 - 2004 4.6L 2V GT Mustang RETURN LESS systems	5/8"	AN8 ORB
4601026	1999 - 2004 4.6L 4V Cobra Mustang RETURN systems	5/8"	AN8 ORB
4601027	1999 - 2004 4.6L 4V Cobra Mustang RETURN LESS systems	5/8"	AN8 ORB
4601028	1999 - 2004 Cobra Mustang RETURN systems (supercharger clearance)	5/8"	AN8 ORB
4601029	1999 - 2004 Cobra Mustang RETURN LESS systems (supercharger clearance)	5/8"	AN8 ORB
4601030	2005 - 4.6L 3V Mustang RETURN systems	5/8"	AN8 ORB
4601031	2005- 4.6L 3V Mustang RETURN LESS systems	5/8"	AN8 ORB
4601032	2007- GT 500 3V Mustang RETURN systems (supercharger clearance)	5/8"	AN8 ORB
4601033	2008- GT 500 3V Mustang RETURN LESS systems (supercharger clearance)	5/8"	AN8 ORB
4601034	Coyote 2011	5/8"	AN8 ORB

Billet Fuel Rail Kits

CPR RACING High Flow Billet Fuel Rails Fits LS2 (2005-06) combine 3,000 HP flow capabilities, ORB-08 In and Out Ports with the ORB leak-free sealing. Full 5/8" ID through bore CNC-machined, billet aluminum just the right fit and Show and Go Finish. Steel mounting brackets, custom engineered for each application, combining a solid, durable mounting platform with correct fit and smooth bolt-on. The Clear Type II bright dip anodized finish.



460002 Is2



460003 Ls3



Part Number	Description	ID	IN/OUT LET
490125	ID 1.25 Fuel Rails Universal (2 Rails)	5/8"	AN8 ORB
460001	97-04 GM LS1, 01-05 LS6 Fuel Rail kit	5/8"	AN8 ORB
460002	Chevy LS2 05-06 GM LS2 Fuel Rail kit	5/8"	AN8 ORB
460003	Chevy LS3/L76 Fuel Rail kit	5/8"	AN8 ORB
460003	Is9	5/8"	AN8 ORB

Part Number	Description	ID	IN/OUT LET
561001	Toyota 2JZ (Suit 14mm injectors)	5/8"	AN8 ORB
561002	Nissan SR20	5/8"	AN8 ORB
561003	Nissan RB25	5/8"	AN8 ORB
561004	Nissan RB26	5/8"	AN8 ORB
561005	Nissan RB30	5/8"	AN8 ORB
561006	MAZDA 13BT S4/5	5/8"	AN8 ORB
561007	Subaru EJ20	5/8"	AN8 ORB
561008	Subaru EJ25	5/8"	AN8 ORB
561009	Subaru WRX STi EJ25 2004-2006	5/8"	AN8 ORB
561010	Subaru EJ20 04-06	5/8"	AN8 ORB
561011	Mitsubishi EVO I-III 4G63/EVO	5/8"	AN8 ORB
561012	Mitsubishi EVO I-III	5/8"	AN8 ORB
561013	Toyota 2JZ-GTE	5/8"	AN8 ORB
561014	Toyota 2JZ-GTE KIT	5/8"	AN8 ORB
561015	MAXDA 13BT S4/5	5/8"	AN8 ORB
561016	K20	1/2"	AN8 ORB



Universal Fuel Pressure Regulator

GB06 Series Fuel Pressure Regulators are designed with performance and with a new redesigned universal bypass fuel pressure regulator for medium to high horsepower applications. This ground-up redesign features an enlarged port design for minimum flow restriction and has a bright-anodized finish to provide a premium show and go appearance.

- vacuum/boost reference port 1:1 ratio
- 1/8NPT gauge port,
- compatibility with gasoline alcohol-based based fuels.
- EFI regulators can be adjusted from 30 to 120 PSI,
- (2) ORB-6 inlet ports on the side
- a -6AN return port located on the bottom.

Mount Bracket: Include



GB10 Series Fuel Pressure Regulators are designed with performance and with a new redesigned universal bypass fuel pressure regulator for medium to high horsepower applications. This ground-up redesign features an enlarged port design for minimum flow restriction and has a bright-anodized finish to provide a premium show-and-go appearance.

- Vacuum/boost reference port 1:1 ratio
- 1/8NPT gauge port,
- compatibility with gasoline and alcohol-based fuels.
- EFI regulators can be adjusted from 30 to 120 PSI,
- (2) ORB-10 inlet ports on the side
- a -8AN return port located on the bottom.

Mount Bracket: Include



GB66 Series is designed for carbureted, they are adjustable regulators that offer higher flow, quicker response, and less pressure drop.

- Adjustable from 5-12 PSI.
- 06 AN inlet and outlet ports
- 1/8' NPT gauge port.



Part Number	Description	Feed	Return
701006	1/8-27NPT	AN6	AN6
701010	1/8-27NPT	2 X AN10	AN8
701266	1/8-27NPT	2 AN6	AN6



Universal Fuel System Components Carburetor kits



170-310-06



181-537-01



180-241-02



182-298-08

PART NUMBER	Description	AN	Thread	Length
160-310-06	310mm -6AN Blue Finish. Suits Holley Dual Fuel Line With Single Or Dual Metering Block 9/16X24	AN6	9/16X24	310mm
160-330-06	330mm -6AN Blue Finish. Suits Holley Dual Fuel Line With Single Or Dual Metering Block 7/8X20	AN6	7/8X20	330mm
170-310-06	310mm -6AN Black Finish. Suits Holley Dual Fuel Line With Single Or Dual Metering Block 9/16X24	AN6	9/16X24	310mm
170-330-06	330mm -6AN Black Finish. Suits Holley Dual Fuel Line With Single Or Dual Metering Block 7/8X20	AN6	7/8X20	330mm
180-220-01	8.66 in / 220mm -8AN Black Finish. Dual Fuel Line With Pro B200 Hose G180 fitting 7/8X20	AN8	7/8X20	220mm
180-241-02	9.48 in / 241mm -6AN Black Finish. Dual Fuel Line With Pro B200 Hose G180 fitting 7/8X20	AN6	7/8X20	241mm
180-241-03	9.48in / 241mm -6AN Black Finish. With Pro B200 Hose G180 fitting 9/16X24	AN6	9/16X24	241mm
180-241-04	9.48in / 241mm -8AN Black Finish. With Pro B200 Hose G180 fitting 7/8X22	AN8	7/8X20	241mm
180-241-05	9.48in / 241mm -8AN Black Finish. With Pro B200 Hose G180 fitting 9/16X24	AN8	9/16X24	241mm
180-247-06	9.24 in / 247mm -8AN Black Finish. With Pro B200 Hose G180 fitting 7/8X20	AN8	7/8X20	247mm
180-247-07	9.24in / 247mm -8AN Black Finish. With Pro B200 Hose G180 fitting 3/4X16	AN8	3/4X16	247mm
180-305-08	12 in / 305mm -8AN Black Finish. With Pro B200 Hose G180 fitting 7/8X20	AN8	7/8X20	305mm
181-537-01	Carburetor adapter male 2.11 in / 53.7mm -6AN Black Finish. 7/8X20	AN6	7/8X20	53.7mm
181-752-02	Carburetor adapter male 2.96 in / 75.2mm -6AN Black Finish. 7/8X21	AN6	7/8X20	75.2mm
181-570-03	Carburetor adapter male 2.24 in / 57mm -6AN Black Finish. 7/8X20	AN8	7/8X20	57.0mm
181-785-04	Carburetor adapter male 3.091 in / 78.5mm -6AN Black Finish. 7/8X21	AN8	7/8X20	78.5mm
182-298-08	CPR Black Billet Fuel Log, Adjustable From 8-1/2" to 11-3/4" / 215.9mm to 298.45 -8 AN Male Flare,	AN8	7/8X20	215.9mm to 298.45



ALUMINIUM SURGE TANK

4 Hole Polished aluminum surge tank supplied
 3 AN6 ORB 1 AN8 ORB
 Or
 3 x 8mm and 1 x 13mm hose barb O-ring fittings.
 Making it suitable for all applications.



Part Number	Description	ID	IN/OUT LET
740000-06	(ORB) AN AN6X3 (top 3 hole) ,AN8 x1 (bottom hole) 1.5L	(ORB) AN	1.5L
740001-08	(ORB) AN AN8x4 (all 4 hole 8AN) 1.5 L	(ORB) AN	1.5L
741000-16	(ORB) Bard AN6X3 (top 3 hole) ,AN8x1 (bottom hole) Bard fitting 1.5L	(ORB) Bard	1.5L
741001-18	(ORB) Bard AN8x4 (all 4 hole 8) Bard fitting 1.5L	(ORB) Bard	1.5L
741001-1	LS Power Steering Tank	AN10	AN8



1L, 2L, and 3 liters
 Female 2 AN10 Fitting
 Breather :12 AN
 TIG Welded
 Stainless Steel Breather O-ring Included
 HI Value Drian

Part Number	Description	Size
741002-1	132*132*98 mm	1L
741002-2	132x132x150mm	2L
741002-3	132x132*208mm	3L
741002-4	132x132x260mm	4L

741001-1

LS Power Steering Tank



Aluminum Catch Tank With filter and Drain liter

CPR Signal and Dual Catch Can & Oil Separator with Dip Stick

CPR oil catch can are necessary on a performance vehicle to protect the engine from elevated levels of crankcase blow-by accumulated from aggressive driving. Excess oil saturated air circulating back into the air intake stream can lead to degraded performance. CPR catch can feature an integrated oil separator that accelerates oil condensation. Also has stainless steel filter media is cleanable and reusable. .

FEATURES:

- Billet aluminum construction
- Mounting bracket
- Oil Dip-Sticks with O-ring
- -10 ORB ports (7/8"-14) top and sides
- -4 ORB drains with plugs (bottom)
- Stainless steel cleanable and reusable filter media
- Pressurized or vacuum applications
- 6 oz. capacity
- O-ring canister seals
- Stainless hardware
- Black anodized aluminum

BENEFITS:

- Prevents oil buildup
- Cleaner inlet air
- Excessive oil collection can be an indicator of a damaged engine

DIMENSIONS SINGAL:

• Height : 5" OD: 2.45"

DIMENSIONS DUAL:

• Height : 5" OD: 2.45" CROSS: 6 "



Part Number	Description	Size	SIZE
78010-08	Universal Single 8 oz Catch Can With Drip Stick	8 oz	AN10
78010-16	Universal Dual 16 oz Catch Can With Drip Stick	16 oz	AN10
78000-06	Fuel Surge Tanks 5 AN6 with wire jumper	AN6	AN6

TOOLS AND TAPE

AN Wrench Double-End Wrench Set, -3 to -20,



99600-7316



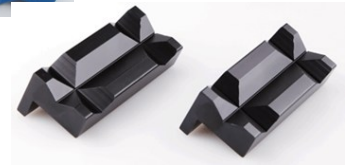
99400-7316

Red – AN Adjustable Spanner G-Wrench

AN3-AN12 Anodized



99700-0316



99000-45	Nylon Vise Jaws w/magnets
99000-46	Aluminum Vise Jaws w/magnets

AN Pro B Hose Cutting Shears for braided and non-braided flex hoses. .



99800-0316



99400-7316

AN4-20

297000-02



297100-05



EXP



297000-02	Roll of White Adhesive Clean Hose Cutting Tape -6.5 Feet (2 Meter)
297100-05	Roll of Clear Adhesive Clear Hose Cutting Tape 16.5 feet (5 Meter)

IDENTIFICATION CHART

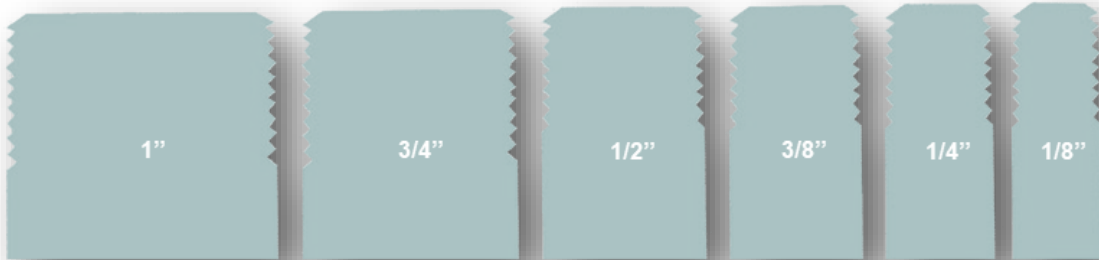
MALE AN / ORB ADAPTER IDENTIFICATION CHART

The drawings below illustrate the actual sizes of the AN/ORB thread sizes. Not sure what thread size you have, Juts lay your fitting over the appropriate drawing to determine its size.



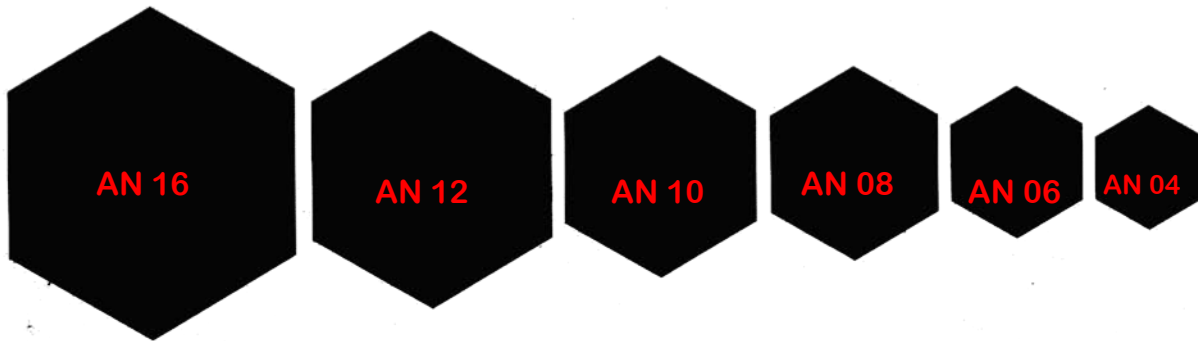
NPT IDENTIFICATION CHART

The drawings below illustrate the actual sizes of the NPT thread sizes. Not sure what thread size you have, Juts lay your fitting over the appropriate drawing to determine its size.

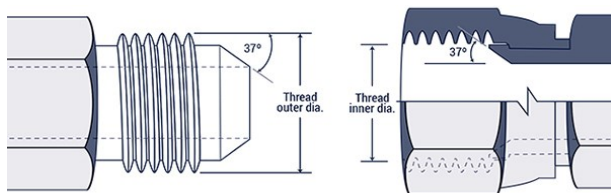


AN HEX OD IDENTIFICATION CHART

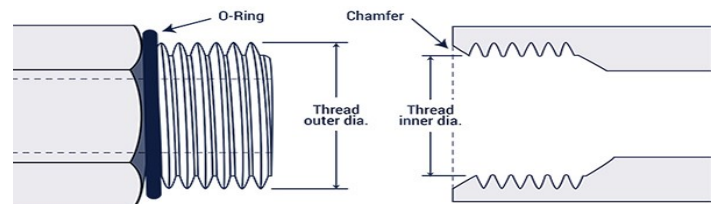
The drawings below illustrate the actual sizes of the AN NUT. Not sure what thread size you have, Juts lay your fitting over the appropriate drawing to determine its size.



JIC 37° Flare



SAE Straight Thread O-Ring (ORB)



Torque Specifications

AN Fitting Size	Max. Torque in Foot Pounds
-3	8.75
-4	11.5
-6	16.25
-8	29
-10	35
-12	45
-16	70
-20	85

Over tighten the aluminum fitting on the adapter, which distorts the 37-degree seat, and may cause leakage. Both the threads and the seat surface should have a drop or two of oil to smooth the tightening process. The maximum torque specifications are listed here. (An alternate method of tightening is to bring the nut to "hand-tight" and then rotate it another turn with the proper wrench.)

A-N Threads

AN Fitting Size	Metal Tube O.D.	Thread Size
3	3/16"	3/8-24
4	1/4"	7/16-20
6	3/8"	9/16-18
8	1/2"	3/4-16
10	5/8"	7/8-14
12	3/4"	1 1/16-12
16	1"	1 5/16-12
20	1 1/4"	1 5/8-12

Use the profiles below to determine the correct AN thread before ordering. The corresponding chart displays the outer diameter of the metal tube and thread size.

Hose Size Chart Fractional Equivalent

All dimensions are in inches unless otherwise noted.

AN	I.D.	O.D.
-4	7/32"	7/16"
-6	11/32"	35/64"
-8	7/16"	41/64"
-10	9/16"	51/64"
-12	11/16"	15/16"
-16	7/8"	1 5/32"
-20	1 1/8"	1 7/16"
-24	1 3/8"	1 45/64"
-28	1 1/2"	1 13/16"
-32	1 3/4"	2 3/32"

Rated flow and pressure drop

Dash	Equivalent Tube Size (IN)	Rated Flow (gal/min)	Surge Flow (gal/min)	Differential Pressure Drop (psid)
-4	1/4	1.2	6	8
-6	3/8	3.5	17.5	8
-8	1/2	6.0	30	8
-10	5/8	10.5	52.5	8
-12	3/4	16.0	80	8
-16	1	29.0	87	8
-20	1 1/4	45.0	90	4
-24	1 1/2	60.0	120	4

ASSEMBLY INSTRUCTIONS

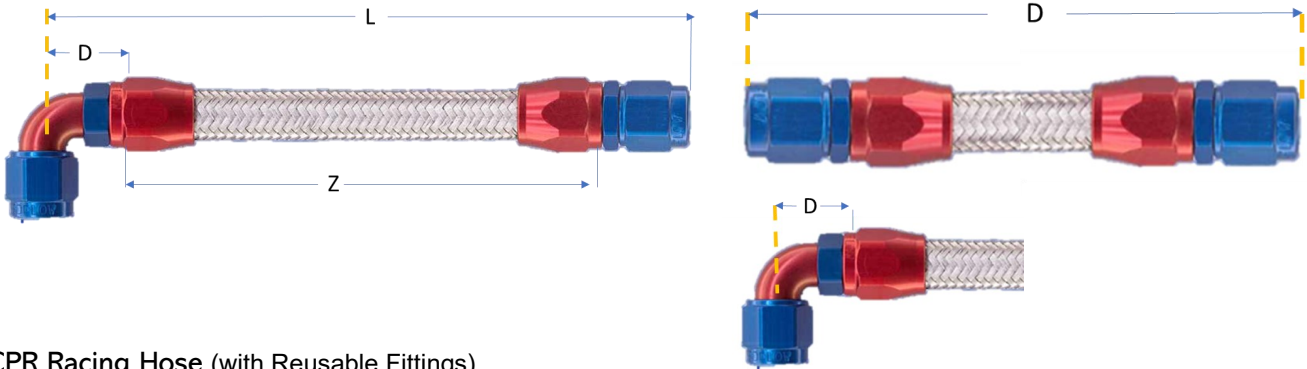
How To Determine Hose Assembly Lengths:

To determine the "Z" length (cut length of hose) from "L" length (overall length), deduct "D" dimensions of both end fittings. Consult fitting information tables for "D" dimensions.

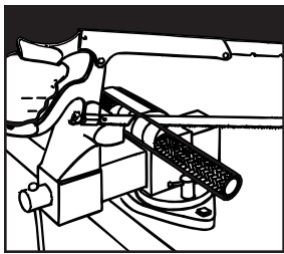
L = Overall Length

Z = Cut Length of Hose

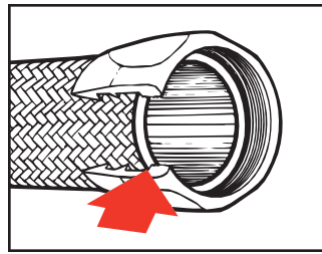
D = Fitting Length



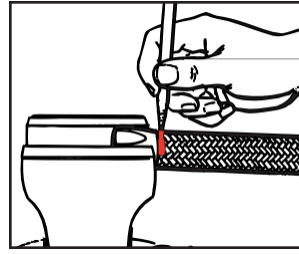
CPR Racing Hose (with Reusable Fittings)



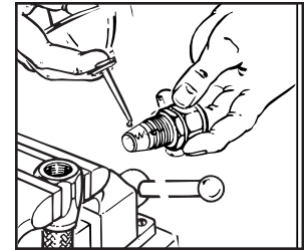
Step 1. Cut hose square to length with fine-tooth hack saw or cut-off wheel. To minimize wire braid flare out, wrap hose with masking tape and cut through tape. Remove tape before next step



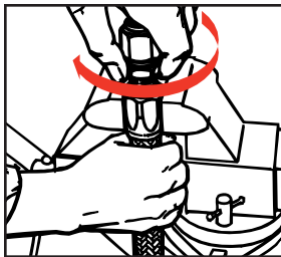
Step 2. Insert hose in socket with twisting, pushing motion until hose is in line with back of socket threads



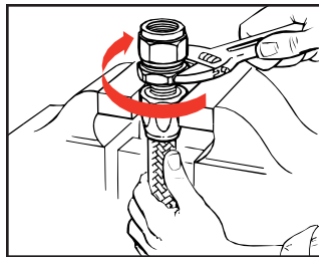
Step 3. Important—Mark position around hose at rear of socket with a grease pencil, paint or tape



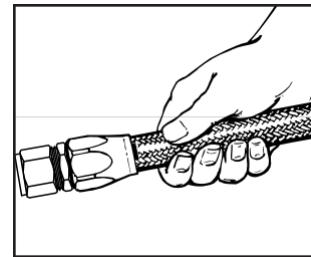
Step 4. Lubricate inside of hose and nipple threads liberally using S.A.E. 30 Oil lubricating oil Lube.



Step 5. Carefully insert nipple and engage nipple and socket threads while holding hose in position with other hand. Make sure hose does not push out of socket by observing mark made in Step 3.



Step 6. Complete assembly using wrench while continuing to hold hose in position. Maximum allowable gap is .031 inches. Your thumbnail is convenient measuring device.



Step 7. Important—Check hose for pushout by observing hose position mark. Pushout should not be evident. **CLEAN, PROOF TEST TO TWICE OPERATING PRESSURE AND INSPECT ALL ASSEMBLIES.** Disassemble in reverse order.



IF you like your fittings Looking like new?
 Aluminum wrenches, CPR 99600-7 SET, and Nylon Vise Jaws with magnets, CPR 99000-45, with CPR wrench and jaws you will protecting the anodized coloring on your fittings. (page27)

Hose Maintenance

Hose Maintenance and Inspection of Hose Assemblies

Hose Maintenance:

Hose assemblies in operation should be inspected frequently for leakage, kinking, abrasion, corrosion, or any other signs of wear or damage. Worn or damaged hose assemblies should be replaced immediately.

Assembly Cleaning:

Clean assembly by blowing out with clean compressed air. Assemblies may be rinsed out with mineral spirits if the tube stock is compatible with oil; otherwise, hot water at +150°F maximum may be used. Consult Eaton for special cleaning equipment.

Assembly Inspection:

Examine hose assembly internally for cut or bulged tube, obstructions, and cleanliness.

For segment style fittings, be sure the hose butts up against the nipple shoulder, band, and retaining ring are properly set and tight, and segments are properly spaced. Check for the proper gap between nut and socket or hex and socket. Nuts should swivel freely. Check the laying of the hose to be sure the assembly is not twisted.

Cap the ends of the hose with plastic covers to keep them clean.

Hydrostatic Proof Testing:

The hose assembly should be hydro-statically tested at twice the recommended working pressure of the hose. Test pressure should be held for not more than one minute and not less than 30 seconds. When test pressure is reached, visually inspect hose assembly for any leaks or signs of weakness and any movement of the hose fitting in relation to the hose. Any of these defects are cause for rejection.

IMPORTANT:

Testing Caution

Testing should be conducted in approved test stands with adequate guards to protect the operator.

Hose Assembly Inspection

Hose assemblies in service should be inspected frequently for leakage, kinking, corrosion, abrasion or any other signs of wear or damage. Hose assemblies that are worn or damaged should be removed from service and replaced immediately.

A Caution about Fuel Injection

All hoses listed in the Creative Performance Racing catalog are suitable for use with leaded and unleaded fuels. However, caution must be used in fuel injection systems that recirculate fuel. This causes fuel to oxidize which can attack the hose inner tube. To increase service life, keep the time of exposure to the oxidized

fuel to a minimum. Drain hose line or flush with original fuel or other suitable material

Note



TOTAL FUEL SYSTEM

Igniting **YOUR PASSION**
for performance

REVIVE THE BEAST IN YOUR CAR

CPPR
Racing.com
TOTAL FUEL SYSTEMS